



[OFP]

 OFP 1/0/1-03 NOV-PREPARED BY: S.LANE TXL-TEL:1 800 555 0199
 ALZ0324/ALZ324 N806SB/738 SELCAL/ ROUTE: DEF RTE
 DEP: SAOR 06 ELEV 1591 FT COST INDEX: 14 TTL G/C DIST: 350NM
 ARR: SABE 13 ELEV 20 FT SPEED: ECON TTL F/P DIST: 358NM
 ALT: SAAR 02 PERF: 0.0% TTL ADIST: 329NAM
 INIT FL/TEMP: 370/M53

TKOF ALT: AVGE WC: P030

 CODES PAX CARGO PTTL UNDL :
 105 182 0 18928 2122Z :
 :
 :
 DOM ZFM TOM LAM :
 41682 MAL 62732 79016 66361 :
 PLN 60610 66897 64235 : SIGNATURE COMMANDER
 ACT :
 :-----

ROUTING: N0447F370 DCT KOVUN UT670 SNT SNT7C
 ATIS:

 FUEL CORR. ENDUR: ANALYSED TRIP FUEL:
 NO DATA AVAILABLE FOR THIS
 FLIGHT
 002662 0058 TRIP FUEL
 000688 0015 CONT 15 MIN
 001822 0041 ALT / SAAR
 001115 0030 FINAL RES
 ADDFU
 6287 0204 PLNTOF
 ALT DIFF
 EXTRA / POSS 2126L
 ACTTOF
 227 0020 TAXI
 BLOCK / MTCAP 20911

NO TANKERING RECOMMENDED
 DISPATCH DEFINED

ZFM INCR 1000 KG: TF +14 KG ZFM DECR 1000 KG: TF -35 KG
 2000 FT BELOW: TF -20 KG / EET 00.58

-----ALTERNATE INFO-----
 ALTN/RWY TYPE DIST COMP/LVL TIME/PNLTY FUEL/PNLTY F.RES
 SAAR/02 - 0192 P006/260 0041/- 01822/- 01115

SAAR/ ATOVO3B ATOVO UW5 PEDRO DCT ESKON ESKON1Q

 SAOR/VME STD 1835 ETD 1835 OFB EST TOF 1855 TOF
 SABE/AEP STA 2005 ETA 2001 ONB EST LDG 1953 LDG
 HRS 0130 0126 BLOCK FLIGHT



AWY -BDRY	WAYPOINT MORA	AVTT W/V	SPD TAS	GS TAS	FL TP	TMP	R/DST	MIN	ACC	ETO/ATO RF/FU
	SAOR/06						358/44			6.3/0.2
KOVUN		05/018								
	KOVUN 41	27/027	280		CLB P12		314/78	009	0009	.../... 5.3/1.2
UT670 -SAEF	RAXUR 34	26/050	280		CLB P05		236/19	009	0018	.../... 4.6/1.9
UT670	UDUPA 25	26/054	280		CLB P06		217/13	002	0020	.../... 4.5/2.0
UT670	TOC 25	25/054	780		CLB P04		204/34	002	0022	.../... 4.4/2.1
UT670	ENTIB 24	25/054	100	774 447	494 425	370	-53 170/16	004	0026	.../... 4.3/2.3
UT670	PULGA 24	24/051	099	774 448	489 491	370	-53 154/31	002	0028	.../... 4.2/2.3
UT670	TOD 24	24/051	099	774 448	489 491	370	-53 123/67	003	0031	.../... 4.0/2.5
UT670	SNT 23	22/011	280		DSC P12		056/34	013	0044	.../... 3.9/2.6
SNT7C	VANAR 21	18/005	280		DSC P09		022/22	006	0050	.../... 3.8/2.7
SNT7C	SABE/13 21	09/013			DSC		000	008	0058	.../... 3.6/2.9



.....WIND INFORMATION.....

CLIMB			TOC			ENTIB			PULGA		
350	261/052	-50	410	258/049	-57	410	259/049	-57	410	253/043	-57
310	264/045	-40	390	254/056	-56	390	255/056	-56	390	248/052	-56
200	276/030	-13	370	253/054	-53	370	253/054	-53	370	244/051	-53
150	283/012	-01	350	252/051	-50	350	252/051	-50	350	240/049	-50
100	347/014	+08	330	251/047	-45	330	252/047	-45	330	238/046	-45
TOD			DESCENT								
410	253/043	-57	350	241/049	-50						
390	249/052	-56	310	227/043	-40						
370	245/052	-53	200	221/018	-13						
350	240/049	-50	150	231/014	-04						
330	238/046	-45	100	245/007	+07						



[ATC Flight Plan]

FF SAMFZQZX SACFZQZX SAEFZQZX
EDDTSBAB
(FPL-ALZ324-IS
-B738/M-SDE2E3FGHIRWXY/LB1
-SAOR1835
-N0447F370 DCT KOVUN UT670 SNT SNT7C
-SABE0058 SAAR
-PBN/A1B1C1D1S1S2 NAV/RNVD1E2A1 DAT/V DOF/211103 REG/N806SB
EET/SACF0005 SAEF0018 OPR/ALZ RVR/075 RMK/TCAS)



[Additional Info]

D I S P A T C H B R I E F I N G I N F O ALZ324 SAOR/SABE



[Weather]

 SAOR --> SABE ALZ 324 / 03NOV2021
 LIDO/WEATHER SERVICE DATE : 03Nov2021 TIME : 18:04 UTC

AIRMETs:
 No Wx data available

SIGMETs:

SAMF MENDOZA FIR
 WS SIGMET 1 VALID 031649/032049 SAME- SAMF MENDOZA FIR
 SEV MTW FCST AT 1649Z WI S3410 W06951 - S3648 W06716 -
 S3746 W06915 - S3823 W07056 - S3603 W07104 - S3600
 W07026 - S3507 W07030 - S3410 W06951 FLSFC/140 MOV SE
 05KT INTSF=
 SAEF EZEIZA FIR
 WS SIGMET B1 VALID 031520/031920 SABE- SAEF EZEIZA FIR
 SEV TURB FCST AT 1520Z WI S3819 W07006 - S4115 W07009
 - S4147 W07056 - S4134 W07138 - S4019 W07138 - S3903
 W07118 - S3819 W07009 - S3819 W07006 FL030/160 STNR
 NC=
 WS SIGMET 4 VALID 031758/031958 SABE- SAEF EZEIZA FIR
 EMBD TSGR FCST AT 1758Z WI S3728 W06822 - S3903 W06634
 - S3903 W06559 - S3845 W06443 - S3643 W06631 - S3728
 W06818 - S3728 W06822 TOP FL370 MOV SE 10KT NC=
 SACF CORDOBA FIR
 WS SIGMET 2 VALID 031503/031903 SACO- SACF CORDOBA FIR
 SEV TURB FCST AT 1503Z WI S2302 W06701 - S2205 W06705
 - S2231 W06653 - S2219 W06646 - S2226 W06615 - S2205
 W06425 - S2207 W06352 - S2226 W06300 - S2252 W06308 -
 S2302 W06413 - S2307 W06702 - S2302 W06701 FL340/390
 MOV ESE 01KT WKN=

Tropical Cyclone SIGMETs:
 No Wx data available

Volcanic Ash SIGMETs:
 No Wx data available

Destination:

SABE/AEP JORGE NEWBERY AEROPARQUE
 SA 031700 1001KT 9999 SCT010 SCT035 24/20 Q1009 NOSIG
 FT 031700 0318/0418 11015KT 9999 SCT015 BKN030 TX24/0418Z TN17/0409Z
 PROB30 TEMPO 0318/0320 8000 -DZ SCT010 BKN020
 BECMG 0319/0321 9999 SCT030
 BECMG 0404/0406 08010KT 8000 BKN015
 TEMPO 0408/0412 OVC010
 BECMG 0413/0415 9999 SCT030

Destination Alternates:

SAAR/ROS ISLAS MALVINAS
 SA 031700 01005KT 340V060 9999 FEW032 OVC052 25/18 Q1008
 FT 031700 0318/0418 VRB03KT 9999 SCT025 BKN040 TX29/0418Z
 TN18/0409Z
 BECMG 0320/0322 09005KT SCT030 SCT040
 TEMPO 0405/0410 5000 BR NSC
 BECMG 0413/0415 VRB03KT 9999 SCT030

Departure:

SAOR/VME VILLA REYNOLDS
 SA 021440 00000KT 9999 FEW010 SCT025 17/14 Q1019
 FT valid TAF found.



AIRPORTLIST ENDED



[Notam]

LIDO-NOTAM-BULLETIN INCLUDES NOTAM, COMP NOTAM AND AIP-REGULATION
VALID: 2111031835 - 2111032314 STD(EOBT)+TRIP+ALTN+3HRS
ALZ 324 /03NOV OFP-NR: 1/0/1
ROUTE: SAOR - SABE ALTN: SAAR
N0447F370 DCT KOVUN UT670 SNT SNT7C

=====
DEPARTURE AIRPORT - DETAILED INFO
=====

SAOR/VME VILLA REYNOLDS

+++++ AIRPORT +++++

A5193/21 VALID: 01-OCT-21 1304 - UFN
MON-FRI 1100-2200
AD HR SER SAT SUN AND HOL O/R 2HR BFR ONLY
SAN AND STATE FLT COOR TEL 02657-15643973

A4719/21 VALID: 07-SEP-21 1252 - UFN
MON-FRI 1000-2200
FUEL AVBL HR SER, SAT, SUN AND HOL O/R COOR TEL 02657-15585106

A4420/21 VALID: 20-AUG-21 1619 - UFN
RFFS U/S

+++++ RUNWAY +++++

A4265/21 VALID: 11-AUG-21 1405 - UFN
RWY 10/28 CLSD

+++++ APPROACH PROCEDURES +++++

A4505/21 VALID: 25-AUG-21 1307 - UFN
IN IAC NR 2 NDB ILS/DME RWY 06 WEF AUG 2007 CANCELLED

A4312/21 VALID: 13-AUG-21 2354 - UFN
ILS RYD 109.5 MHZ RWY 06 IN SER WITH RESTRICTION DO NOT USE OUT
10NM DME/GP

A2203/19 VALID: 24-APR-19 2105 - UFN
IN IAC NO.1 VOR/DME ILS/DME RUNWAY 06 AUGUST 2007 IN PLAIN VIEW
WHERE IT READS 6.2 DME/GP IT MUST READ FAF 5.2 DME/GP, IN PROFILE
VIEW WHERE IT READS 7.3 DME/GP 7.5 DME/VOR IT MUST READ IF 7.3
DME/GP 7.5 DME/VOR AND WHERE IT READS 6.2 DME/GP 6.4 DME/VOR IT
MUST READ FAF 5.2 DME/GP 5.4 DME/VOR.

=====
DESTINATION AIRPORT - DETAILED INFO
=====

SABE/AEP JORGE NEWBERY AEROPARQUE

+++++ RUNWAY +++++

A5780/21 VALID: 02-NOV-21 0400 - 30-NOV-21 0700
02,04,09,11,16,18,23,25 AND 30 0400-0700
RWY 13/31 CLSD DUE TO WIP

+++++ APPROACH PROCEDURES +++++

A5276/21 VALID: 05-OCT-21 1521 - 05-NOV-21 2359



CHART ILS Y RWY 13 TEMPO SUSPENDED. MODIFIES
SUP AIP A004/21 WEF 25-FEB-2021

A5063/21 VALID: 24-SEP-21 1548 - 24-DEC-21 2359
IN CHART ILS Z RWY 13, IN PROFILE VIEW, DIST GP-DME -OM-
WHERE IT READS 0.5 IT MUST READ 3.6 DIST GP-DME -MM-
WHERE IT READS 0.5 IT MUST READ 0.6
MODIFIES SUP AIRAC 04/2021 WEF 25-MAR-2021

A1549/21 VALID: 25-MAR-21 0000 - UFN
CHART IAC NR 2 VOR (DME) ILS (DME) RWY 13 AMDT AIRAC DEC-2009
AND CHART IAC NR 7 LI RWY 31 (WO HLDG) AMDT AIRAC JAN-2009
CANCELLED MODIFIES AIP VOL III

A1550/21 VALID: 25-MAR-21 0000 - UFN
REF SUP AIP A10/2013 CHART IAC NR 3 LI ILS (DME) RWY 13, CHART
IAC NR 4 VOR (DME) LO LI O GNSS RWY 13 (FM VANAR) , CHART IAC NR 5
LI LO LI RWY 13 (WO HLDG) AND CHART IAC N 6 LI O GNSS RWY 13 (FM
QUILMES) NOT VALID

A2459/15 VALID: 14-MAY-15 1750 - UFN
IN ORDER TO ENHACE THE AIRSPACE USE RADAR ASSISTANCE IS PROVIDED
FOR INSTRUMENT APPROACHES INSIDE AEROPARQUE CTR TO KEEP IN
SEQUENCE APPROACH TRAFFIC UNDER SURVEILLANCE THIS RADAR ASSITANCE
DOES NOT MEAN RADAR APPROACH CONROL SERVICE

+++++ STAR +++++

A2861/21 VALID: 31-MAY-21 1813 - UFN
IN CHART STAR RWY 31 SURBO 2B-SARGO 7D-KOVUK 7D-TENIL 7D- BELGRANO
7D-VALOS 7D-ASADA 7D IN NAME CHART WHERE IT READS SARGO 7D IT MUST
READS UGIMI 7D, IN PLAIN VIEW WHERE IT READS FM SARGO IT MUST
READS FM UGIMI, WHERE IT READS SARGO 6D IT MUST READS UGIMI 7D,
WHERE IT READS KOVUK 6D IT MUST READS KOVUK 7D, WHERE IT READS
TENIL 6D IT MUST READS TENIL 7D,WHERE IT READS GBE 6D IT MUST
READS GBE 7D, WHERE IT READS ASADA 6D IT MUST READS ASADA 7D,
WHERE IT READS VALOS 6D IT MUST READS VALOS 7D, WHERE IT READS
SURBO 1B IT MUST READS SURBO 2B. MODIFIES AIP VOL III, WEF JUL
2008
IN CHART STAR RNP RWY 31 VALOS 8R-BELGRANO 7R- TENIL 7R-SARGO 7R
IN NAME CHART WHERE IT READS SARGO 7R IT MUST READS UGIMI 7R, IN
PLAIN VIEW 7R IT MUST READS UGIMI 7R AND WHERE IT READS WPT SARGO
IT MUST READS UGIMI, IN CODE TABLE WHERE IT READS SARGO 7R IT MUST
READS UGIMI 7R AND WHERE IT READS IDENT WPT SARGO IT MUST READS
IDENT WPT UGIMI, MODIFIES AIP VOL III, AMDT 1/18 WEF 11 OCT 2018

=====
DESTINATION ALTERNATE AIRPORT(S)
=====

SAAR/ROS ISLAS MALVINAS

+++++ AIRPORT +++++

A5737/21 VALID: 25-OCT-21 1602 - 24-JAN-22 2300
RFFS DOWNGRADED TO CAT 6

A4926/21 VALID: 17-SEP-21 0157 - 17-DEC-21 0300
APN S LTD TO GA AND NON SKED COMMERCIAL FLT (MAX 19
PAX), MAX STAY OVERNIGHT 48HR, COOR 24HR BFR
BY EMAIL ARRIBOSAERONAVES(A)AIROSARIO.COM.AR

A4330/21 VALID: 15-AUG-21 0154 - 15-NOV-21 1000
TWY E AVBL DAY OPS

+++++ RUNWAY +++++

A4437/21 VALID: 20-AUG-21 2042 - 23-NOV-21 1800



DUE TO WORK IN PROGRESS ON RWY 02/20.SEE INFORMATIVE WORK
 BULLETIN-REV 7. MADE BY AIR AVBL IN LINK:

WWW.ANAC.COM.AR/INFRAESTRUCTURA Y
 AERODROMOS/AERODROMOS/OBRAS:ROSARIO/ISLAS MALVINAS ROS-SAAR

- A4436/21 VALID: 20-AUG-21 2005 - 23-NOV-21 1800
 PAPI RWY 20 U/S
- A4435/21 VALID: 20-AUG-21 2002 - 23-NOV-21 1800
 THR 20 NEW COORD GEO 325334.55S/0604656.08W ELEV 24M
- A4433/21 VALID: 20-AUG-21 1937 - 23-NOV-21 1800
 THR 20 TURN SGL FOR 180DEG ONLY ACFT CODE C OR
 SHORTER WINGSPAN
- A4431/21 VALID: 20-AUG-21 1859 - 23-NOV-21 1800
 DUE TO WIP MAINT NEW DECLARED DIST:
 RWY 02 TORA 2690M TODA 2690M ASDA 2690M LDA 2690M
 RWY 20 TORA 2690M TODA 2940M ASDA 2690M LDA 2690M
- A4430/21 VALID: 20-AUG-21 1830 - 23-NOV-21 1800
 DTHR 20, 310M RWY AVBL 2690M

+++++ APPROACH PROCEDURES +++++

- A5924/21 VALID: 02-NOV-21 1710 - 08-NOV-21 2359
 VOR/DME ROS 117.3 MHZ CH 120X U/S
- A5535/21 VALID: 18-OCT-21 1545 - 19-JAN-22 2359
 IN RNP CHART RWY 20 (LNAV/VNAV), AVBL ONLY PROC LNAV,
 PROC APV BARO VNAV (LNAV/VNAV) SUSPENDED MODIFIES AIP VOL III AMDT
 AIRAC 2/18 WEF 31-JAN-2019
- A4427/21 VALID: 20-AUG-21 1724 - 23-NOV-21 1800
 ILS MM 75.0 MHZ RWY 20 U/S
- A4421/21 VALID: 20-AUG-21 1629 - 23-NOV-21 1800
 ILS DME CH 36X U/S
- A4415/21 VALID: 20-AUG-21 1544 - 23-NOV-21 1800
 ILS GP 333.8 MHZ RWY 20 U/S
- A2643/21 VALID: 19-MAY-21 2008 - UFN
 IN CHART RNP RWY 02 (LNAV/VNAV) IN BOX MNM VIS LNAV VNAV WHERE IT
 READS VIS 1300M FOR ALL CATEGORIES IT MUST READ VIS ALS 900M RVR
 900M AND VIS WO ALS 1300M RVR 1300M
 IN BOX MNM VIS LNAV WHERE IT READS VIS 1700M CAT A/B IT MUST READ
 VIS ALS 1300M AND VIS WO ALS 1700M CAT A/B. WHERE IT READS VIS
 1900M CAT C/D IT MUST READ VIS ALS 1500M AND VIS WO ALS 1900M CAT
 C/D MODIFIES AIP VOL III, AMDT AIRAC 2/18 WEF 31 JAN 2019
- A2498/21 VALID: 12-MAY-21 2328 - UFN
 IN CHART VOR X RWY 02, IN BOX MNM VIS VOR
 WHERE IT READS VIS 2700M FOR ALL CATEGORIES A/B IT MUST READ VIS
 ALS 2300M AND VIS WO ALS 2700M CAT A/B,
 WHERE IT READS 2900M FOR ALL CATEGORIES C/D IT MUST READ VIS ALS
 2500M AND VIS WO ALS 2900M CAT C/D
 MODIFIES AIP VOL III, AMDT AIRAC 2/18 WEF 31 JAN 2019
- A2497/21 VALID: 12-MAY-21 2318 - UFN
 IN CHART VOR Z RWY 02, VOR AND RWY 02, IN BOX MNM VIS VOR/DME
 WHERE
 IT READS VIS 2300M FOR ALL CATEGORIES A/B IT MUST READ VIS ALS
 1900M AND VIS WO ALS 2300M CAT A/B,
 WHERE IT READS 2500M FOR ALL CATEGORIES C/D IT MUST READ VIS ALS
 2100M AND VIS WO ALS 2500M CAT C/D
 MODIFIES AIP VOL III, AMDT AIRAC 2/18 WEF 31 JAN 2019
- A2495/21 VALID: 12-MAY-21 2309 - UFN
 IN CHART RNP RWY 20 (LNAV/VNAV) IN BOX MNM VIS LNAV/VNAV WHERE IT
 READS VIS 1300M FOR ALL CATEGORIES IT MUST READ VIS 1300M RVR
 1300M MODIFIES AIP VOL III AMDT AIRAC 2/18 WEF 31 JAN 2019
- A2494/21 VALID: 12-MAY-21 2300 - UFN
 IN CHART ILS Z RWY 20, ILS AND RWY 20, ILS X RWY 20 IN BOX MNM VIS
 ILS/DME WHERE IT READS VIS 1200M FOR ALL CATEGORIES IT MUST READ
 VIS 1200 M RVR 1200M



MODIFIES AIP VOL III, AMDT AIRAC 2/18 WEF 31 JAN 2019
A0794/19 VALID: 05-FEB-19 1448 - UFN
CHANGES AIP VOL III AIRAC AMDT 2/18 JANUARY 31ST 2019 IN IAC CHART
RNP RWY 02 IN SDF PROFILE VIEW WHERE IT READS IMDAD IT MUST READ
AR056. IN CODE TABLE SEQ NUM 010 FIX IDENT SINIV IN ALTITUDE COLUMN
WHERE IT READS 3000 IT MUST READ 2000 AND IN SPEED LIMIT COLUMN
WHERE IT READS -220 IT MUST READ -180.

***** STAR *****

A2768/21 VALID: 26-MAY-21 2253 - UFN
CHART STAR RNP RWY 20 DABOT 2U -ESKON 2U - GEDUK 2U - IMBUX 2U-
MUPIS 2U- TINTA 2U -VUKSO 2U -VUMKI 2U AND CHART STAR RNP RWY 02
DABOT 2Q -ESKON 2Q -GEDUK 2Q -IMBUX 2Q - MUPIS 2Q -TINTA 2Q -VUKSO
2Q -VUMKI 2Q CNL.
IN FORCE CHART STAR RNP RWY 20 DABOT 1U -ESKON 1U - GEDUK 1U -
MUPIS 1U -ROKER 1U- TINTA 1U -VUKSO 1U -VUMKI 1U AND CHART STAR
RNP RWY 02 DABOT 1Q -ESKON 1Q -GEDUK 1Q -MUPIS 1Q -ROKER 1Q -TINTA
1Q -VUKSO 1Q -VUMKI 1Q AMDT AIRAC 2/18 WEF 31 JAN 2019. MODIFIES
AIP VOL III AMDT AIRAC 3/2019 WEF 5 DEC 2019.

=====
EXTENDED AREA AROUND DEPARTURE
=====

SAMF MENDOZA FIR

A5824/21 VALID: 28-OCT-21 1359 - UFN
A/G FAC FREQ 134.700 MHZ AVBL ALTN TEMPO REAVA MENDOZA
F) GND G) FL450

A5683/21 VALID: 22-OCT-21 1807 - UFN
A/G FAC MENDOZA ACC FREQ 124.20 MHZ CHANGED TO 126.6 MHZ

A5198/21 VALID: 01-OCT-21 1506 - UFN
A/G FAC MENDOZA ACC 6586KHZ, 3016KHZ, 10006KHZ,
6649KHZ, 2944KHZ, AND 10024KHZ U/S

A5153/21 VALID: 29-SEP-21 2006 - UFN
ACC MENDOZA ATS IS NOT PROVIDED IN AWYS:
UT671 BTN MIBAS-EGIKA FM FL250-F350
UL322 BTN ILSUR-ASIMO FM FL250-FL350
UM799 BTN REPEV-ASIMO FM FL250-FL350
UL416 BTN MIBAS-ILSUR FM FL250-FL350
UN527 BTN GUVOL-320639.00S/0693736.00W FM FL250-FL350
UM529 BTN 314600.00S/0693611.00W-ASIMO FM FL250-FL350
B560 BTN MIBAS-EDRAR FM FL200-FL250
F) FL200 G) FL350

A5101/21 VALID: 27-SEP-21 2206 - UFN
SIGNIFICANT EN-ROUTE WEATHER PHENOMENON CHARTS SFC/FL250 TEMPO
SUSPENDED

A4968/21 VALID: 25-SEP-21 1010 - 26-DEC-21 2200
11 OCT SAT,SUN, NOV 22 AND DEC 8 SR-SS
PJE WILL TAKE PLACE IN AD MERCEDES- SAN LUIS -COORD
GEO 333833S/0652515W RDO 5NM AFFECTS TMA VILLA REYNOLDS AND ATZ AD
MERCEDES ACT SUBJ TO TFC IN DEVELOPMENT
F) GND G) FL100

A4908/21 VALID: 16-SEP-21 1807 - UFN
ACT ANTI HAIL FIGHT CAMPAIGN YEAR 2021/2022 MENDOZA PROVINCE
GENERAL RULES PROCEDURE AND RESTRICTED TRANSITORY SECT PUBLISHED
IN AIP ENR 3.5-13 3.5-17 AND 3.5-18

A4414/21 VALID: 20-AUG-21 1527 - UFN
IN DESIGNATORS OF REP (WO NAVAIDS POSITION) PAG 12,
WHERE IT READS LADER IT SHOULD READ KOLNA. COORD WHERE
IT READS 260830S/0540556W IT SHOULD READ 260833S/0540554W.



MODIFIES AIP VOL I, ENR 4.4, AMDT 03/2020 WEF 08 OCT 2020
 A4413/21 VALID: 20-AUG-21 1522 - UFN
 IN CHARTS RTE -CHARTS IN RTE OF NAVIGATION LOWER 1
 WHERE IT READS LADER WHERE IT READS KOLNA.
 MODIFIES AIP VOL I, ENR 6.1 AMDT 01/2020 WEF 27 FEB 2020
 A4412/21 VALID: 20-AUG-21 1501 - UFN
 ATS RTE -RTE ATS LOWER PAG 11, COLUMN 1, WHERE IT READS
 LADER IT SHOULD READ KOLNA.IT SHOULD READS AS MANDATORY
 MODIFIES AIP VOL I, ENR 3.1, AMDT 01/2020 WEF 27 FEB 2020
 A4411/21 VALID: 20-AUG-21 1458 - UFN
 IN CHART IN RTE -AREA CHARTS TMA FOZ ARR/DEP RTE AND TFC
 WHERE IT READS LADER IT SHOULD READ KOLNA
 MODIFIES AIP VOL I, ENR 6.8, AMDT 3/2019 WEF 5 DEC 2019
 A3895/21 VALID: 21-JUL-21 1640 - UFN
 IN ENR 6.10 CHARTS IN RTE -CHART FOR VFR FLT BELOW TMA
 BAIRES IN VERTICAL LIMIT ATZ MARIANO MORENO (ENO) WHERE IT
 READS 2500FT/GND IT MUST READS 1500FT/GND. MODIFIES AIP VOL I,
 AMDT 3/2019, WEF 05 DEC 2019
 A3894/21 VALID: 21-JUL-21 1636 - UFN
 IN AIP
 ENR 6.8, CORDOBA TMA RTE ARR/DEP AND TRANSIT
 WHERE IT READS TRC IT MUST READ RCU.
 ENR 6.13, CHARTS IN RTE - NAVIGATION CHARTS ON RTE - CONTINGENCY
 PLAN FOR REPUBLICA ARGENTINA- SIMPLIFIED NETWORK OF ATS
 RTE-INF,WHERE IT READS TRC IT MUST READ RCU.
 ENR 6.14, CHARTS ON RTE -NAVIGATION CHARTS ON RTE -CONTINGENCYPLAN
 FOR REPUBLICA ARGENTINA-SIMPLIFIED NETWORK OF ATS RTE-SUP,WHERE IT
 READS TRC IT MUST READ RCU.
 MODIFIES AIP VOL I, AMDT AIRAC 03/2019 WEF 05 DEC 2019
 A3893/21 VALID: 21-JUL-21 1632 - UFN
 IN ENR 6.12 CHARTS IN RTE -CHART FOR HELICORRIDORS BAIRES IN
 VERTICAL LIMIT ATZ MARIANO MORENO (ENO) WHERE IT READS 2500FT/GND
 IT MUST READS 1500FT/GND. MODIFIES AIP VOL I, AMDT 3/2019, WEF 05
 DEC 2019
 A3891/21 VALID: 21-JUL-21 1628 - UFN
 IN ENR 6.8 CHARTS IN RTE -CHART FOR AREA, IN TMA FOZ ARR RTE,
 DEP AND TRANSIT, WHERE IT READ COSTA 252853S/0551355W
 IT MUST READS COSTA 253043S/0551411W. MODIFIES AIP VOL 1, AMDT
 3/2019, WEF 05 DEC 2019
 A3597/21 VALID: 05-JUL-21 1434 - UFN
 IN ENR 1.10 FLT OF PLANNING -ANEXO I- NETWORK SIMPLIFIED OF RTE
 ATS -LOWER AIRSPACE- IN PAGE 30, ELIMINATE AWY B682. ADD AWY G550,
 ONE-WAY: NOT, TWO-WAY: PUERTO WILLIAMS VOR/DME PWL BALMACEDA
 VOR/DME BAL, REMARKS: NOT.
 IN ENR 1.10 FLT OF PLANNING-ANEXO I- NETWORK SIMPLIFIED OF RTE ATS
 -UPPER AIRSPACE- IN PAGE 32, IN AWY UL417, WHERE IT SAYS PUPSI IT
 MUST SAY TOPOG. ADD AWY UL670, ONE-WAY: NOT, TWO-WAY: PUERTO
 WILLIAMS VOR/DME PWL BALMACEDA VOR/DME BAL, REMARKS: NOT. ADD AWY
 UN527, ONE-WAY: GUVOL- SANJUAN VOR/DME JUA, TWO-WAY: NOT, REMARKS:
 NOT. IN AWY UM529, IN ONE-WAY, WHERE IT SAYS ASIMO -ARPAS IT MUST
 SAY SAN JUAN VOR/DME JUA -ASIMO. ELIMINATE AWY UM658
 MODIFIED AIP VOL I AMDT 3/20 WEF 08-OCT-2020
 A3596/21 VALID: 05-JUL-21 1428 - UFN
 IN ATS AIRSPACE FIR, UIR, CTR, IN MARIANO MORENO ATZ
 WHERE IT SAYS ESTACION JOSE C. PAZ (343110S/0584500W)
 IT MUST SAY ESTACION JOSE C. PAZ (343109S/0584500W) MODIFIED
 AIP VOL I, ENR 2.1-20, AMDT AIRAC 3/2020 WEF 08-OCT-2020
 A3539/21 VALID: 02-JUL-21 0011 - UFN
 IN AMDT AIRAC 2/21 WEF 17 JUN 2021, IN ENR 4.4 - RADIO-AID AND
 SYSTEM OF NAVIGATION - NAME- CODE- DESIGNATORS FOR SIGNIFICANT
 POINTS, ADD WPT IN AGREEMENT TO COLUMN NAME OF DESIGNATOR/COORD
 GEO/ LOCATION:
 ANDEG/283657S-0641730W/W6 - UW6 - UZ112 -



ANDUD/353438S-0625749W/UW68 UT688
 ANSIG/281522S-0644952W/W5
 ASODO/260628S-0640842W/UT672 T673
 DEVEB/311000S-0635115W/IAC CBA
 DILOG/392015S-0681600W/UZ109 Z109
 DONED/393839S-0603741W/UW33 - UZ117
 EDPUN/291936S-0614201W/UL404
 EDVIK/280401S-0635120W/W8-UT 680
 EGUNO/403611S-0702456W/W26-UW26-UZ109 Z109
 ESLED/271120S-0620419W/UW7 - UL404
 ESOKA/225806S-0645117W/UL322
 ESONA 312606S - 0640952W IAC CBA
 ETALU/343058S-0671055W/UM424 - UT685
 GEDUN/332923S-0662256W/UA 306 - UT685 - UL 405
 GEGAT/355549S-0681926W/UW37 - UT685
 GEMDO/494231S-0674816W/ UW45-UZ117
 A3539/21 NOTAMN
 Q) SAXX/QAPXX/IV/BO/E/000/999/6431S06128W999
 A) SAEF SACF SAMF SARR SAVF PART 3 OF 4 B) 2107020011 C) PERM
 E) IN AMDT AIRAC 2/21 WEF 17 JUN 2021, IN ENR 4.4 - RADIO-AID AND
 SYSTEM OF NAVIGATION - NAME- CODE- DESIGNATORS FOR SIGNIFICANT
 POINTS, ADD WPT IN AGREEMENT TO COLUMN NAME OF DESIGNATOR/COORD
 GEO/ LOCATION:
 ORBAL/455354S-0705216W/UW58-W58-UZ116 - Z116
 ORUDO/472904S-0675356W/W49
 PABEN/304156S-0612923W/UT 652-UL 404
 POPLU/335104S-0644801W/UA306-UZ114-UL 405
 PUDBA/224815S-0652731W/UN525
 PULNA/401714S-0610039W/UZ117
 QUILI/251729S-0622514W/ UL 404-UM 799 REPUM/310149S-0621151W/UT652
 UL550
 ROGOD/323147S-0682119W/UZ108 - UZ105 SIGEM/365626S-0691014W/UZ107-
 Z107-UT685 SILOP/353838S-0660510W/UM783 - UB684 - UZ114
 SIPOM/330443S-0664926W/UT670 UT652
 SULSO/312233S-0675611W/UM529-UZ108
 TAGUA/251747S-0643608W/T672 TMA SAL
 TIMDO/383443S-0662616W/UT669
 //END PART 03//

A3539/21 NOTAMN
 Q) SAXX/QAPXX/IV/BO/E/000/999/6431S06128W999
 A) SAEF SACF SAMF SARR SAVF PART 4 OF 4 B) 2107020011 C) PERM
 E) IN AMDT AIRAC 2/21 WEF 17 JUN 2021, IN ENR 4.4 - RADIO-AID AND
 SYSTEM OF NAVIGATION - NAME- CODE- DESIGNATORS FOR SIGNIFICANT
 POINTS, ADD WPT IN AGREEMENT TO COLUMN NAME OF DESIGNATOR/COORD
 GEO/ LOCATION:
 TOGNO/430052S-0624348W/UZ117
 TOLEM/303117S-0613103W/UL404 UM 400
 UDUPA/334704S-0623818W/UT670-UZ 113
 UREVI/243133S-0640409W/UM789-UZ 112
 USTOT/221111S-0660420W/UM776
 USVER/353407S-0680138W/UM783 - UB684 - UT685
 USVET/331527S-0671533W/UA306 - UL 405 - UT 652
 VADUN/261349S-0640434W/UT672-UZ112
 VUGMA/331208S-0660945W/UT670-UT685
 VULEK/285858S-0625321W/ UT 680-W8
 VUMUD/350423S-0640140W/UT700-UT 688
 VUROT/314629S-0634820W/UW15 - UT 652 - UZ 113
 VUSAP/362226S-0611240W/UT654 UT 688
 WHERE IT READS AMVUK IT MUST READS MIBOK 544904S/0674032W IAC USU,
 WHERE IT READS LITOK IT MUST READS ROMIV 544005S/0683638W G/UG
 550-SID USU-UL 670
 //END PART 04/04//

A3537/21

VALID: 01-JUL-21 2338 - UFN



IN ROUTES ATS -NAVIGATION ROUTES AREA, PAGE 27, IN UL670 (RNAV5) BALMACEDA SECTION VOR/DME BAL-ROGEL, COLUMN 2, WHERE IT READS 164/344 50 NM, IT MUST READS 166/346 50 NM. IN ROGEL-ASADO SECTION, COLUMN 2, WHERE IT READS 164/344 77 NM IT MUST READS 166/346 77 NM. IN SECTION ASADO-ASOPA , COLUMN 2, WHERE IT READS 164/343 96 NM IT MUST READS 166/346 96 NM. IN SECTION ASOPA-BUVOK, COLUMN 2, WHERE IT READS 164/343 67 NM IT MUST READS 166/346 67 NM. IN SECTION BUVOK-EGOSA, COLUMN 2, WHERE IT READS 164/343 77 NM IT MUST READS 166/346 77 NM. MODIFIES AIP VOL I ENR 3.3 AMDT AIRAC 2/2020 WEF 26 MAR 2020.

A3402/21 VALID: 25-JUN-21 1940 - UFN
IN ATS AIRSPACE - FIR, UIR, TMA PAGE 22 CTR RIO CUARTO COLUMN 1 LATERAL LIMITS WHERE IT SAYS VOR TRC MUST SAY VOR RCU MODIFIES AIP VOL I ENR 2.1 AMDT AIRAC 2/2018 31-JAN-2019

A3254/21 VALID: 17-JUN-21 2009 - UFN
IN AIP ATS RTE - ATS RTE UPPER PAGE 29, COLUMN 6, WAY COMODORO RIVADAVIA VOR/DME CRV-LOMIN IT MUST READ COMODORO RIVADAVIA ACC (SECT S) 125.7MHZ 2965KHZ 5547KHZ 11282KHZ REF AIP VOL I ENR 3.2 AIRAC AMDT 01/2020 WEF 27-FEB-2020

A2997/21 VALID: 05-JUN-21 1847 - UFN
IN ATS RTE -AREA NAVIGATION ROUTES- PAGE 25, COLUMN 1, WHERE IT READS KOGSA, IT MUST READ DIKOR MODIFIES AIP VOL I, ENR 3.3, AMDT 1/2020 WEF 27 FEB 2020

A2996/21 VALID: 05-JUN-21 1843 - UFN
IN CHART RTE - NAVIGATION CHART IN RTE LOWER 1 IN AWY W70 AND UPPER 1 IN AWY UL550, WHERE IT READS KOGSA, IT MUST READ DIKOR MODIFIES AIP VOL I , ENR 6.1-6.2, AMDT 1/2020 WEF 27 FEB 2020

A2995/21 VALID: 05-JUN-21 1839 - UFN
IN ATS RTE- LOWER ATS RTE- PAGE 52, COLUMN 1, WHERE IT READS KOGSA, IT MUST READ DIKOR. MODIFIES AIP VOL I, ENR 3.1 AMDT 1/2020 WEF 27 FEB 2020

A2972/21 VALID: 04-JUN-21 2029 - UFN
IN -RADIO-AID AND SYSTEM OF NAVIGATION -NAME- CODE DESIGNATORS FOR SIGNIFICANT POINTS, PAG 11, COLUMN 1, WHERE IT READS KOGSA MUST IT READ DIKOR. MODIFIES AIP VOL I, ENR 4.4, AMDT 1/2019 WEF 18 JUL 2019

A2858/21 VALID: 31-MAY-21 1753 - UFN
IN AIP RUTAS ATS - RUTAS DE NAVIGACION DE AREA, PAGE 25 IN SECTION PUBER-KOGSA COLUMN 2 WHERE IT READS COURSE 155 DIST 89 NM IT MUST READ COURSE 155 DIST 51 NM. IN SECTION KOGSA-SISAP WHERE IT READS COURSE 155 DIST 89 NM IT MUST READ COURSE 155 DIST 38 NM. REF AIP VOL I ENR 3.3 AIRAC AMDT 1/2020 WEF 27 FEBRUARY 2020

A2769/21 VALID: 26-MAY-21 2333 - UFN
IN CHARTS ATS RTE CHARTS FOR AREAS, IN TMA PARANA ARR RTE/ DEPARTURES AND TRANSIT, IN AWY UL550 BTN ROKER- VOR ROS, WHERE IT READ 81NM MUST READS 73NM. MODIFIES AIP VOL I, ENR 6.8, AMDT 3/19 WEF 05 DEC 2019.

A2687/21 VALID: 21-MAY-21 1934 - UFN
IN ATS RTE -LOWER ATS RTE- PAGE 26, IN SECTION ITADO-RECONQUISTA VOR/DME RTA, COLUMN 2 WHERE IT READS 209/025 30NM IT MUST READ 209/029 30NM MODIFIES AIP VOL I, ENR 3.1, AMDT AIRAC 1/2020 WEF 27-FEB-2020.

A2657/21 VALID: 20-MAY-21 1924 - UFN
IN AIP RUTAS ATS- RUTAS DE NAVIGACION DE AREA, PAGE 65, IN SECTION ANLIS-LOLIV, COLUMN 2, WHERE IT READS 122/302 20 NM MUST READ 121/301 20 NM. REF AIP VOL I ENR 3.3 AIRAC AMDT 1/2020 WEF 27 FEBRUARY 2020

A2656/21 VALID: 20-MAY-21 1922 - UFN
IN AIP RUTAS ATS - RUTAS DE NAVIGACION DE AREA, PAGE 19, WPT GEMIK, COLUMN 1, WHERE IT READS 244130S-0623131W MUST READ 244230S-0623131W. IN PAGE 32, WPT ETALU, COLUMN 1 WHERE IT READS 3430582S-0671055W IT MUST READ 343058S-0671055W. REF AIP VOL I ENR



3.3 AMDT AIRAC 1/2020 WEF 27 FEBRUARY 2020
A2661/21 VALID: 20-MAY-21 1710 - UFN
IN AIP RUTAS ATS-RUTAS DE NAVEGACION DE AEREA IN PAGE 70
IN COLUMN 2 DONBO-TIRGA WHERE IT READS 179/359 225 NM MUST READ
181/359 225 NM AND IN TIRGA-GUDUX WHERE IT READS 178/358 61 NM
MUST READ 179/358 61 NM.
IN COLUMN 5 IN TRAMO WPT DONBO-GUDUX IN
DIRECTION TO GUDUX WHERE IT READS IMPAR MUST READ PAR AND IN TRAMO
WPT GUDUX-DONBO IN DIRECTION TO DONBO WHERE IT READS PAR IT MUST
READ IMPAR MODIFIES AIP VOL I, ENR 3.3 AMDT 1/20 WEF 27 FEB 2020

A2658/21 VALID: 20-MAY-21 1635 - UFN
IN AIP RUTAS ATS - RUTAS DE NAVEGACION DE AREA, PAGE 8,
IN WPT EL TURBIO NDB BIO, COLUMN 1 WHERE IT READS 513836S-0721317W
MUST READ 513636S-0721317W PAGE 82, IN WPT IRAVU, COLUMN 1, WHERE
IT READS 504605S-0684619W MUST READ 504605S-0684519W. REF AIP VOL
I, ENR 3.3 AIRAC AMDT 1/2020 WEF 27 FEBRUARY 2020

A2642/21 VALID: 19-MAY-21 1821 - UFN
IN AMDT AIRAC 1/2020 WEF FEB 27 2020 IN ENR 3.3 - RUTAS ATS -
RUTAS DE NAVEGACION DE AREA, PAGES 28 AND 29 COLUMN 5, IN SEGMENT
KUBIR-GUALEGUAYCHU VOR/DME GUA- IN DIRECTION TO -GUALEGUAYCHU
VOR/DME GUA WHERE IT READS IMPAR MUST READ PAR

A2641/21 VALID: 19-MAY-21 1819 - UFN
IN AMDT AIRAC 1/2020 WEF 27 FEB 2020 IN ENR 3.1 RUTAS ATS-RUTAS
ATS INFERIORES, PAGE 49, IN SECTION MUBES-RIO GALLEGOS VOR/DME
GAL, IN COLUMN 3, ADD FL MNM FL60. MODIFY AIP VOL I

A2639/21 VALID: 19-MAY-21 1813 - UFN
IN AIP ENR 6.3 CARTAS EN RUTA -CARTA DE NAVEGACION EN RUTA INF 2-
AMDT AIRAC 01/2020 WEF 27 FEB 2020, WHERE IT READS: TRC IT MUST
READ: RCU
IN AIP ENR 6.4 CARTAS EN RUTA -CARTA DE NAVEGACION EN RUTA SUP 2-
AMDT AIRAC 01/2020 WEF 27 FEB 2020 WHERE IT READS: TRC IT MUST
READ:RCU

A2630/21 VALID: 19-MAY-21 1345 - UFN
IN AIP RUTAS ATS -RUTAS DE NAVEGACION DE AREA, PAGE 6,
IN SECTION ISMIL-ENRIL, COLUMN 2 WHERE IT READS 173 NM
IT MUST READ 124 NM. REF AIP VOL I, ENR 3.3 IN AIRAC
AMDT 1/2020 WEF 27 FEBRUARY 2020

A2629/21 VALID: 19-MAY-21 1333 - UFN
IN AIP RUTAS ATS - RUTAS ATS INFERIORES, PAGE 22, IN WPT SIMES,
COLUMN 1, WHERE IT READS 320305S-0633353W MUST READ
320306S-0633352W REF AIP VOL 1 ENR 3.1 AIRAC AMDT 1/2020 WEF 27
FEBRUARY 2020

A2628/21 VALID: 19-MAY-21 1330 - UFN
IN AIP VOL I AMDT AIRAC 1/2020 WEF 27 FEB 2020, ENR 6.1 CARTAS EN
RUTA- CARTAS DE NAVEGACION EN RUTA INF 1, SALTA TMA, WHERE IT
READS KOVAT 242845S 0642704W ADD REP O/R

A2621/21 VALID: 18-MAY-21 1943 - UFN
IN AR-RNAV, PAGE 74, COLUMN 1, WHERE IT READS RODOG IT MUST READ
RODOG.
PAGE 19, COLUMN 1, WHERE IT READS GEMIK (244130S 0623131W) IT MUST
READ GEMIK (244230S 0623131W).
IN PAGE 30 COLUMN 1 WHERE IT READS TODEM IT MUST READ TOLEM
IN PAGE 59 COLUMN 1 WHERE IT READS VADUN (261349S 0640443W)IT MUST
READ VADUN (261349S 0640434W).
MODIFIES AIP VOL I, ENR 3.3 AMDT AIRAC 01/2020 WEF 27 FEB 2020

A2620/21 VALID: 18-MAY-21 1939 - UFN
ON AR-LOWER AR, PAGE 8 COLUMN 1, WPT ALDOS IT MUST READ AS WTP
COMPULSORY REPORTING POINT, MODIFIES AIP VOL I ENR 3.1, AMDT AIRAC
01/2020 WEF 27 FEB 2020

A2619/21 VALID: 18-MAY-21 1934 - UFN
IN AR-RNAV RTE. PAGE 15, COLUMN 1, WHERE IT READS UL 211 F
(RNAV 5) IT MUST READ UL 211 F (RNAV) MODIFIES AIP VOL I ENR 3
AMDT 01/2020 WEF 27 FEB 2020



A2618/21 VALID: 18-MAY-21 1925 - UFN
ON ATS RTE SUP PAG 31 IN SECTION BONTA-GEBOS COLUMN 2 WHERE IT
READS 145/323 91 NM IT MUST READ 144/323 91 NM IN SECTION
GEBOS-LOMUR, COLUMN 2, WHERE IT READS 144/320 110 NM IT MUST READ
141/320 110 NM , MODIFIES AIP VOL I, ENR 3.2 AMDT AIRAC 01/2020
WEF 27 FEB 2020

A2318/21 VALID: 04-MAY-21 2005 - UFN
ACFT CERTIFIED FOR OPR RNP 1, IN ACCORDANCE TO AIC 01/11 WEF
03/11 WILL BE AUTHORIZED TO PERFORM SID AND STAR CONVENTIONAL
PROCEDURES, REGARDLESS OF RADIO-NAVAID OPS

=====
EXTENDED AREA AROUND DESTINATION
=====

SAEF EZEIZA FIR

A5761/21 VALID: 03-NOV-21 1200 - 05-NOV-21 2100
DLY 1200-1500 1800-2100
TEMPO RESTRICTED AREA EXER GUN ACT IN FORTIN COVUNCO
- NEUQUEN- COORD GEO: 384329S/0695826W - 385002S/0695144W
385149S/0695546W -384504S/0700055W. AFFECTS AWY B556
F) GND G) FL190

A5693/21 VALID: 01-NOV-21 1130 - 03-NOV-21 2030
01-03 1100-2030
RESTRICTED AREA ACT FLT MIL EXER IN MAZARUCA- ENTRE RIOS.
COORD GEO:333606S/0591633W RDO 06NM. AFFECTS AWY W8 AND CTA EZEIZA
RADIAL I. ACT SUBJ TO TFC IN DEVELOPMENT
F) GND G) FL140

A5830/21 VALID: 31-OCT-21 1000 - 29-JAN-22 2200
DLY SR-SS
PJE WILL TAKE PLACE IN MIRAMAR-BUENOS AIRES
COORD GEO: 381334S/0575215W RDO 2NM.
AFFECTS CTR-TMA MAR DEL PLATA
ACT SUBJ TO TFC IN DEVELOPMENT
F) GND G) FL100

C2092/21 VALID: 27-OCT-21 1100 - 05-NOV-21 2100
DLY 1100-2100
ZONA RESTRINGIDA DE VUELOS ACT UA FLT BTN LAS FLORES Y BRANSEN EN
UN CORREDOR COORD GEO: 350650S/0580907W - 350851S/0580608W -
355700S/0584735W - 355521S/0585029W NO AFECTA ESPACIO AEREO
CONTROLADO
F) 700 FT G) 900FT AGL

C2045/21 VALID: 16-OCT-21 0910 - 15-DEC-21 2300
DLY SR-SS
PARAGLIDING FLT WILL TAKE PLACE IN CANUELAS COORD GEO:
350254S/0585338W 350130S/0585024W 350306S/0584820W
350322S/0584921W 350250S/0585006W 350351S/0585226W
AIRPACE CONTROLLED NOT AFFECTS
F) GND G) 1000FT AGL

A5045/21 VALID: 30-SEP-21 1100 - 30-NOV-21 2200
DLY SR-SS
PJE WILL TAKE PLACE IN CANIADA DE GOMEZ -SANTA FE-
COORD GEO 324831S/0612154W RDO 2NM AFFECTS AWY W55 AND W24
ACT SUBJ TO TFC IN DEVELOPMENT
F) GND G) FL100

A5105/21 VALID: 28-SEP-21 1342 - UFN
A/G FAC FREQ AUX 124.1 MHZ INSTL SECT 4 S EZEIZA FIR

A5101/21 VALID: 27-SEP-21 2206 - UFN
SIGNIFICANT EN-ROUTE WEATHER PHENOMENON CHARTS SFC/FL250 TEMPO
SUSPENDED

A4783/21 VALID: 17-SEP-21 1000 - 15-DEC-21 2305



DLY SR-SS
 PJE WILL TAKE PLACE IN AD ESPERANZA -SANTA FE- COORD GEO:
 312824S/0605043W RDO 2 NM. AFFECTS PARANA TMA AND SAUCE VIEJO CTR
 ACT SUBJ TO TFC IN DEVELOMNT
 F) GND G) FL120

A4666/21 VALID: 11-SEP-21 1100 - 09-DEC-21 2100
 DLY 1100-2100
 PJE WILL TAKE PLACE IN ISLA VLADIMIR -SANTA FE-
 COORD GEO 325331S/0603926W RDO 2NM AFFECTS CTR
 AND TMA ROSARIO ACT SUBJ TO TFC IN DEVELOPMENT
 F) GND G) FL120

A4667/21 VALID: 11-SEP-21 1100 - 09-DEC-21 2100
 DLY 1100-2100
 PJE WILL TAKE PLACE IN MONUMENTO A LA BANDERA -SANTA FE-
 COORD GEO 325653S/0603745W RDO 2NM AFFECTS CTR AND TMA
 ROSARIO ACT SUBJ TO TCF IN DEVELOPMENT
 F) GND G) FL120

A4668/21 VALID: 11-SEP-21 1100 - 09-DEC-21 2100
 DLY 1100-2100
 PJE WILL TAKE PLACE IN WAKELAND -SANTA FE-
 COORD GEO 325155S/0605727W RDO 2NM AFFECTS CTR
 AND TMA ROSARIO ACT SUBJ TO TFC IN DEVELOPMENT
 F) GND G) FL120

A4669/21 VALID: 11-SEP-21 1100 - 09-DEC-21 2100
 DLY 1100-2100
 PJE WILL TAKE PLACE IN PARQUE SUNCHALES -SANTA FE-
 COORD GEO 325533S/0603934W RDO 2NM AFFECTS CTR AND
 TMA ROSARIO ACT SUBJ TO TFC IN DEVELOPMENT
 F) GND G) FL120

A4671/21 VALID: 11-SEP-21 1100 - 09-DEC-21 2100
 DLY 1100-2100
 PJE WILL TAKE PLACE IN PARQUE SCALABRINI ORTIZ -SANTA FE-
 COORD GEO 325548S/0603956W RDO 2NM AFFECTS CTR AND TMA ROSARIO ACT
 SUBJ TO TFC IN DEVELOPMENT
 F) GND G) FL120

A4664/21 VALID: 11-SEP-21 1010 - 09-DEC-21 2305
 DLY SR-SS
 PJE WILL TAKE PLACE IN AD CASILDA - SANTA FE-
 COORD GEO 330343S/0611238W, RDO 2NM AFFECTS TMA ROSARIO,
 AWY W24 AND W72 ACT SUBJ TO TFC IN DEVELOPMENT
 F) GND G) FL120

A4670/21 VALID: 03-SEP-21 2218 - 09-DEC-21 2100
 DLY 1100-2100
 PJE WILL TAKE PLACE IN PARQUE DE LAS COLECTIVIDADES
 -SANTA FE-COORD GEO 325516S/0603848W RDO 2NM AFFECTS CTR
 AND TMA ROSARIO ACT SUBJ TO TFC IN DEVELOPMENT
 F) GND G) FL120

A4529/21 VALID: 27-AUG-21 1820 - UFN
 ACC EZEIZA WO SER ATS IN AWY W20 BTN CABAL AND GEBUS BTN FL50 AND
 FL100

A4400/21 VALID: 26-AUG-21 1050 - 21-NOV-21 2235
 DLY SR-SS
 PJE WILL TAKE PLACE IN AD ALLEN-RIO NEGRO-COORD GEO:
 385729S/0674813W RDO 3NM. AFFECTS TMA NEUQUEN.
 ACT SUBJ TO TFC IN DEVELOPMENT.
 F) GND G) FL120

A4414/21 VALID: 20-AUG-21 1527 - UFN
 IN DESIGNATORS OF REP (WO NAVAIDS POSITION) PAG 12,
 WHERE IT READS LADER IT SHOULD READ KOLNA. COORD WHERE
 IT READS 260830S/0540556W IT SHOULD READ 260833S/0540554W.
 MODIFIES AIP VOL I, ENR 4.4, AMDT 03/2020 WEF 08 OCT 2020

A4413/21 VALID: 20-AUG-21 1522 - UFN
 IN CHARTS RTE -CHARTS IN RTE OF NAVEGATION LOWER 1



WHERE IT READS LADER WHERE IT READS KOLNA.
 MODIFIES AIP VOL I, ENR 6.1 AMDT 01/2020 WEF 27 FEB 2020
 A4412/21 VALID: 20-AUG-21 1501 - UFN
 ATS RTE -RTE ATS LOWER PAG 11, COLUMN 1, WHERE IT READS
 LADER IT SHOULD READ KOLNA.IT SHOULD READS AS MANDATORY
 MODIFIES AIP VOL I, ENR 3.1, AMDT 01/2020 WEF 27 FEB 2020
 A4411/21 VALID: 20-AUG-21 1458 - UFN
 IN CHART IN RTE -AREA CHARTS TMA FOZ ARR/DEP RTE AND TFC
 WHERE IT READS LADER IT SHOULD READ KOLNA
 MODIFIES AIP VOL I, ENR 6.8, AMDT 3/2019 WEF 5 DEC 2019
 A3895/21 VALID: 21-JUL-21 1640 - UFN
 IN ENR 6.10 CHARTS IN RTE -CHART FOR VFR FLT BELOW TMA
 BAIRES IN VERTICAL LIMIT ATZ MARIANO MORENO (ENO) WHERE IT
 READS 2500FT/GND IT MUST READS 1500FT/GND. MODIFIES AIP VOL I,
 AMDT 3/2019, WEF 05 DEC 2019
 A3894/21 VALID: 21-JUL-21 1636 - UFN
 IN AIP
 ENR 6.8, CORDOBA TMA RTE ARR/DEP AND TRANSIT
 WHERE IT READS TRC IT MUST READ RCU.
 ENR 6.13, CHARTS IN RTE - NAVIGATION CHARTS ON RTE - CONTINGENCY
 PLAN FOR REPUBLICA ARGENTINA- SIMPLIFIED NETWORK OF ATS
 RTE-INF,WHERE IT READS TRC IT MUST READ RCU.
 ENR 6.14, CHARTS ON RTE -NAVIGATION CHARTS ON RTE -CONTINGENCYPLAN
 FOR REPUBLICA ARGENTINA-SIMPLIFIED NETWORK OF ATS RTE-SUP,WHERE IT
 READS TRC IT MUST READ RCU.
 MODIFIES AIP VOL I, AMDT AIRAC 03/2019 WEF 05 DEC 2019
 A3893/21 VALID: 21-JUL-21 1632 - UFN
 IN ENR 6.12 CHARTS IN RTE -CHART FOR HELICORRIDORS BAIRES IN
 VERTICAL LIMIT ATZ MARIANO MORENO (ENO) WHERE IT READS 2500FT/GND
 IT MUST READS 1500FT/GND. MODIFIES AIP VOL I, AMDT 3/2019, WEF 05
 DEC 2019
 A3891/21 VALID: 21-JUL-21 1628 - UFN
 IN ENR 6.8 CHARTS IN RTE -CHART FOR AREA, IN TMA FOZ ARR RTE,
 DEP AND TRANSIT, WHERE IT READ COSTA 252853S/0551355W
 IT MUST READS COSTA 253043S/0551411W. MODIFIES AIP VOL 1, AMDT
 3/2019, WEF 05 DEC 2019
 A3597/21 VALID: 05-JUL-21 1434 - UFN
 IN ENR 1.10 FLT OF PLANNING -ANEXO I- NETWORK SIMPLIFIED OF RTE
 ATS -LOWER AIRSPACE- IN PAGE 30, ELIMINATE AWY B682. ADD AWY G550,
 ONE-WAY: NOT, TWO-WAY: PUERTO WILLIAMS VOR/DME PWL BALMACEDA
 VOR/DME BAL, REMARKS: NOT.
 IN ENR 1.10 FLT OF PLANNING-ANEXO I- NETWORK SIMPLIFIED OF RTE ATS
 -UPPER AIRSPACE- IN PAGE 32, IN AWY UL417, WHERE IT SAYS PUPSI IT
 MUST SAY TOPOG. ADD AWY UL670, ONE-WAY: NOT, TWO-WAY: PUERTO
 WILLIAMS VOR/DME PWL BALMACEDA VOR/DME BAL, REMARKS: NOT. ADD AWY
 UN527, ONE-WAY: GUVOL- SANJUAN VOR/DME JUA, TWO-WAY: NOT, REMARKS:
 NOT. IN AWY UM529, IN ONE-WAY, WHERE IT SAYS ASIMO -ARPAS IT MUST
 SAY SAN JUAN VOR/DME JUA -ASIMO. ELIMINATE AWY UM658
 MODIFIED AIP VOL I AMDT 3/20 WEF 08-OCT-2020
 A3596/21 VALID: 05-JUL-21 1428 - UFN
 IN ATS AIRSPACE FIR, UIR, CTR, IN MARIANO MORENO ATZ
 WHERE IT SAYS ESTACION JOSE C. PAZ (343110S/0584500W)
 IT MUST SAY ESTACION JOSE C. PAZ (343109S/0584500W) MODIFIED
 AIP VOL I, ENR 2.1-20, AMDT AIRAC 3/2020 WEF 08-OCT-2020
 A3539/21 VALID: 02-JUL-21 0011 - UFN
 IN AMDT AIRAC 2/21 WEF 17 JUN 2021, IN ENR 4.4 - RADIO-AID AND
 SYSTEM OF NAVEGATI?N - NAME- CODE- DESIGNATORS FOR SIGNIFICANT
 POINTS, ADD WPT IN AGREEMENT TO COLUMN NAME OF DESIGNATOR/COORD
 GEO/ LOCATION:
 ANDEG/283657S-0641730W/W6 - UW6 - UZ112 -
 ANDUD/353438S-0625749W/UW68 UT688
 ANSIG/281522S-0644952W/W5
 ASODO/260628S-0640842W/UT672 T673



DEVEB/311000S-0635115W/IAC CBA
 DILOG/392015S-0681600W/UZ109 Z109
 DONED/393839S-0603741W/UW33 - UZ117
 EDPUN/291936S-0614201W/UL404
 EDVIK/280401S-0635120W/W8-UT 680
 EGUNO/403611S-0702456W/W26-UW26-UZ109 Z109
 ESLED/271120S-0620419W/UW7 - UL404
 ESOKA/225806S-0645117W/UL322
 ESONA 312606S - 0640952W IAC CBA
 ETALU/343058S-0671055W/UM424 - UT685
 GEDUN/332923S-0662256W/UA 306 - UT685 - UL 405
 GEGAT/355549S-0681926W/UW37 - UT685
 GEMDO/494231S-0674816W/ UW45-UZ117
 A3539/21 NOTAMN
 Q) SAXX/QAPXX/IV/BO/E/000/999/6431S06128W999
 A) SAEF SACF SAMF SARR SAVF PART 3 OF 4 B) 2107020011 C) PERM
 E) IN AMDT AIRAC 2/21 WEF 17 JUN 2021, IN ENR 4.4 - RADIO-AID AND
 SYSTEM OF NAVEGATI?N - NAME- CODE- DESIGNATORS FOR SIGNIFICANT
 POINTS, ADD WPT IN AGREEMENT TO COLUMN NAME OF DESIGNATOR/COORD
 GEO/ LOCATION:
 ORBAL/455354S-0705216W/UW58-W58-UZ116 - Z116
 ORUDO/472904S-0675356W/W49
 PABEN/304156S-0612923W/UT 652-UL 404
 POPLU/335104S-0644801W/UA306-UZ114-UL 405
 PUDBA/224815S-0652731W/UN525
 PULNA/401714S-0610039W/UZ117
 QUILI/251729S-0622514W/ UL 404-UM 799 REPUM/310149S-0621151W/UT652
 UL550
 ROGOD/323147S-0682119W/UZ108 - UZ105 SIGEM/365626S-0691014W/UZ107-
 Z107-UT685 SILOP/353838S-0660510W/UM783 - UB684 - UZ114
 SIPOM/330443S-0664926W/UT670 UT652
 SULSO/312233S-0675611W/UM529-UZ108
 TAGUA/251747S-0643608W/T672 TMA SAL
 TIMDO/383443S-0662616W/UT669
 //END PART 03//
 A3539/21 NOTAMN
 Q) SAXX/QAPXX/IV/BO/E/000/999/6431S06128W999
 A) SAEF SACF SAMF SARR SAVF PART 4 OF 4 B) 2107020011 C) PERM
 E) IN AMDT AIRAC 2/21 WEF 17 JUN 2021, IN ENR 4.4 - RADIO-AID AND
 SYSTEM OF NAVEGATI?N - NAME- CODE- DESIGNATORS FOR SIGNIFICANT
 POINTS, ADD WPT IN AGREEMENT TO COLUMN NAME OF DESIGNATOR/COORD
 GEO/ LOCATION:
 TOGNO/430052S-0624348W/UZ117
 TOLEM/303117S-0613103W/UL404 UM 400
 UDUPA/334704S-0623818W/UT670-UZ 113
 UREVI/243133S-0640409W/UM789-UZ 112
 USTOT/221111S-0660420W/UM776
 USVER/353407S-0680138W/UM783 - UB684 - UT685
 USVET/331527S-0671533W/UA306 - UL 405 - UT 652
 VADUN/261349S-0640434W/UT672-UZ112
 VUGMA/331208S-0660945W/UT670-UT685
 VULEK/285858S-0625321W/ UT 680-W8
 VUMUD/350423S-0640140W/UT700-UT 688
 VUROT/314629S-0634820W/UW15 - UT 652 - UZ 113
 VUSAP/362226S-0611240W/UT654 UT 688
 WHERE IT READS AMVUK IT MUST READS MIBOK 544904S/0674032W IAC USU,
 WHERE IT READS LITOK IT MUST READS ROMIV 544005S/0683638W G/UG
 550-SID USU-UL 670
 //END PART 04/04//
 A3537/21

VALID: 01-JUL-21 2338 - UFN

IN ROUTES ATS -NAVIGATION ROUTES AREA, PAGE 27, IN UL670 (RNAV5)
 BALMACEDA SECTION VOR/DME BAL-ROGEL, COLUMN 2, WHERE IT READS
 164/344 50 NM, IT MUST READS 166/346 50 NM. IN ROGEL-ASADO



SECTION, COLUMN 2, WHERE IT READS 164/344 77 NM IT MUST READS 166/346 77 NM. IN SECTION ASADO-ASOPA , COLUMN 2, WHERE IT READS 164/343 96 NM IT MUST READS 166/346 96 NM. IN SECTION ASOPA-BUVOK, COLUMN 2, WHERE IT READS 164/343 67 NM IT MUST READS 166/346 67 NM. IN SECTION BUVOK-EGOSA, COLUMN 2, WHERE IT READS 164/343 77 NM IT MUST READS 166/346 77 NM. MODIFIES AIP VOL I ENR 3.3 AMDT AIRAC 2/2020 WEF 26 MAR 2020.

- A3402/21 VALID: 25-JUN-21 1940 - UFN
IN ATS AIRSPACE - FIR, UIR, TMA PAGE 22 CTR RIO CUARTO COLUMN 1
LATERAL LIMITS WHERE IT SAYS VOR TRC MUST SAY VOR RCU MODIFIES AIP
VOL I ENR 2.1 AMDT AIRAC 2/2018 31-JAN-2019
- A3254/21 VALID: 17-JUN-21 2009 - UFN
IN AIP ATS RTE - ATS RTE UPPER PAGE 29, COLUMN 6,
WAY COMODORO RIVADAVIA VOR/DME CRV-LOMIN IT MUST READ
COMODODO RIVADAVIA ACC (SECT S) 125.7MHZ 2965KHZ 5547KHZ
11282KHZ REF AIP VOL I ENR 3.2 AIRAC AMDT 01/2020
WEF 27-FEB-2020
- A2997/21 VALID: 05-JUN-21 1847 - UFN
IN ATS RTE -AREA NAVEGATION ROUTES- PAGE 25, COLUMN 1, WHERE IT
READS KOGSA, IT MUST READ DIKOR MODIFIES AIP VOL I, ENR 3.3, AMDT
1/2020 WEF 27 FEB 2020
- A2996/21 VALID: 05-JUN-21 1843 - UFN
IN CHART RTE - NAVEGATION CHART IN RTE LOWER 1 IN AWY W70 AND
UPPER 1 IN AWY UL550, WHERE IT READS KOGSA, IT MUST READ DIKOR
MODIFIES AIP VOL I , ENR 6.1-6.2, AMDT 1/2020 WEF 27 FEB 2020
- A2995/21 VALID: 05-JUN-21 1839 - UFN
IN ATS RTE- LOWER ATS RTE- PAGE 52, COLUMN 1, WHERE IT READS
KOGSA,IT MUST READ DIKOR. MODIFIES AIP VOL I, ENR 3.1 AMDT 1/2020
WEF 27 FEB 2020
- A2972/21 VALID: 04-JUN-21 2029 - UFN
IN -RADIO-AID AND SYSTEM OF NAVEGATION -NAME- CODE DESIGNATORS FOR
SIGNIFICANT POINTS, PAG 11, COLUMN 1, WHERE IT READS KOGSA MUST IT
READ DIKOR. MODIFIES AIP VOL I, ENR 4.4, AMDT 1/2019 WEF 18 JUL
2019
- A2864/21 VALID: 31-MAY-21 1833 - UFN
IN AIP VOL III AEROPARQUE JORGE NEWBERY /EL PALOMAR IN CHART STAR
RWY 13/16 SARGO 7C - KOVUK 7C - TENIL 7C- BELGRANO 7C
WEF APR 2012 WHERE IT READS RWY 13/16 IT MUST READ RWY 13/17 WHERE
IT READS SARGO 7C IT MUST READ UGIMI 7C, WHERE IT READS SARGO IT
MUST READ UGIMI AND WHERE IT READS SARGO 7C IT MUST READ UGIMI 7C
MODIFIES AIP VOL III WEF APR 2012
- A2858/21 VALID: 31-MAY-21 1753 - UFN
IN AIP RUTAS ATS - RUTAS DE NAVEGACION DE AREA, PAGE 25 IN SECTION
PUBER-KOGSA COLUMN 2 WHERE IT READS COURSE 155 DIST 89 NM IT MUST
READ COURSE 155 DIST 51 NM. IN SECTION KOGSA-SISAP WHERE IT READS
COURSE 155 DIST 89 NM IT MUST READ COURSE 155 DIST 38 NM.
REF AIP VOL I ENR 3.3 AIRAC AMDT 1/2020 WEF 27 FEBRUARY 2020
- A2769/21 VALID: 26-MAY-21 2333 - UFN
IN CHARTS ATS RTE CHARTS FOR AREAS, IN TMA PARANA ARR RTE/
DEPARTURES AND TRANSIT, IN AWY UL550 BTN ROKER- VOR ROS,
WHERE IT READ 81NM MUST READS 73NM. MODIFIES AIP VOL I, ENR 6.8,
AMDT 3/19 WEF 05 DEC 2019.
- A2687/21 VALID: 21-MAY-21 1934 - UFN
IN ATS RTE -LOWER ATS RTE- PAGE 26, IN SECTION ITADO-RECONQUISTA
VOR/DME RTA, COLUMN 2 WHERE IT READS 209/025 30NM IT MUST READ
209/029 30NM MODIFIES AIP VOL I, ENR 3.1, AMDT AIRAC 1/2020 WEF
27-FEB-2020.
- A2657/21 VALID: 20-MAY-21 1924 - UFN
IN AIP RUTAS ATS- RUTAS DE NAVEGACION DE AREA, PAGE 65, IN SECTION
ANLIS-LOLIV, COLUMN 2,WHERE IT READS 122/302 20 NM MUST READ
121/301 20 NM. REF AIP VOL I ENR 3.3 AIRAC AMDT 1/2020 WEF 27
FEBRUARY 2020
- A2656/21 VALID: 20-MAY-21 1922 - UFN



IN AIP RUTAS ATS - RUTAS DE NAVEGACION DE AREA, PAGE 19, WPT GEMIK, COLUMN 1, WHERE IT READS 244130S-0623131W MUST READ 244230S-0623131W. IN PAGE 32, WPT ETALU, COLUMN 1 WHERE IT READS 3430582S-0671055W IT MUST READ 343058S-0671055W. REF AIP VOL I ENR 3.3 AMDT AIRAC 1/2020 WEF 27 FEBRUARY 2020

A2661/21 VALID: 20-MAY-21 1710 - UFN
 IN AIP RUTAS ATS-RUTAS DE NAVEGACION DE AEREA IN PAGE 70
 IN COLUMN 2 DONBO-TIRGA WHERE IT READS 179/359 225 NM MUST READ 181/359 225 NM AND IN TIRGA-GUDUX WHERE IT READS 178/358 61 NM MUST READ 179/358 61 NM.
 IN COLUMN 5 IN TRAMO WPT DONBO-GUDUX IN DIRECTION TO GUDUX WHERE IT READS IMPAR MUST READ PAR AND IN TRAMO WPT GUDUX-DONBO IN DIRECTION TO DONBO WHERE IT READS PAR IT MUST READ IMPAR MODIFIES AIP VOL I, ENR 3.3 AMDT 1/20 WEF 27 FEB 2020

A2658/21 VALID: 20-MAY-21 1635 - UFN
 IN AIP RUTAS ATS - RUTAS DE NAVEGACION DE AREA, PAGE 8,
 IN WPT EL TURBIO NDB BIO, COLUMN 1 WHERE IT READS 513836S-0721317W MUST READ 513636S-0721317W PAGE 82, IN WPT IRAVU, COLUMN 1, WHERE IT READS 504605S-0684619W MUST READ 504605S-0684519W. REF AIP VOL I, ENR 3.3 AIRAC AMDT 1/2020 WEF 27 FEBRUARY 2020

A2642/21 VALID: 19-MAY-21 1821 - UFN
 IN AMDT AIRAC 1/2020 WEF FEB 27 2020 IN ENR 3.3 - RUTAS ATS - RUTAS DE NAVEGACION DE AREA, PAGES 28 AND 29 COLUMN 5, IN SEGMENT KUBIR-GUALEGUAYCHU VOR/DME GUA- IN DIRECTION TO -GUALEGUAYCHU VOR/DME GUA WHERE IT READS IMPAR MUST READ PAR

A2641/21 VALID: 19-MAY-21 1819 - UFN
 IN AMDT AIRAC 1/2020 WEF 27 FEB 2020 IN ENR 3.1 RUTAS ATS-RUTAS ATS INFERIORES, PAGE 49, IN SECTION MUBES-RIO GALLEGOS VOR/DME GAL, IN COLUMN 3, ADD FL MNM FL60. MODIFY AIP VOL I

A2639/21 VALID: 19-MAY-21 1813 - UFN
 IN AIP ENR 6.3 CARTAS EN RUTA -CARTA DE NAVEGACION EN RUTA INF 2- AMDT AIRAC 01/2020 WEF 27 FEB 2020, WHERE IT READS: TRC IT MUST READ: RCU
 IN AIP ENR 6.4 CARTAS EN RUTA -CARTA DE NAVEGACION EN RUTA SUP 2- AMDT AIRAC 01/2020 WEF 27 FEB 2020 WHERE IT READS: TRC IT MUST READ: RCU

A2630/21 VALID: 19-MAY-21 1345 - UFN
 IN AIP RUTAS ATS -RUTAS DE NAVEGACION DE AREA, PAGE 6,
 IN SECTION ISMIL-ENRIL, COLUMN 2 WHERE IT READS 173 NM IT MUST READ 124 NM. REF AIP VOL I, ENR 3.3 IN AIRAC AMDT 1/2020 WEF 27 FEBRUARY 2020

A2629/21 VALID: 19-MAY-21 1333 - UFN
 IN AIP RUTAS ATS - RUTAS ATS INFERIORES, PAGE 22, IN WPT SIMES, COLUMN 1, WHERE IT READS 320305S-0633353W MUST READ 320306S-0633352W REF AIP VOL 1 ENR 3.1 AIRAC AMDT 1/2020 WEF 27 FEBRUARY 2020

A2628/21 VALID: 19-MAY-21 1330 - UFN
 IN AIP VOL I AMDT AIRAC 1/2020 WEF 27 FEB 2020, ENR 6.1 CARTAS EN RUTA- CARTAS DE NAVEGACION EN RUTA INF 1, SALTA TMA, WHERE IT READS KOVAT 242845S 0642704W ADD REP O/R

A2621/21 VALID: 18-MAY-21 1943 - UFN
 IN AR-RNAV, PAGE 74, COLUMN 1, WHERE IT READS RODOG IT MUST READ RODOG.
 PAGE 19, COLUMN 1, WHERE IT READS GEMIK (244130S 0623131W) IT MUST READ GEMIK (244230S 0623131W).
 IN PAGE 30 COLUMN 1 WHERE IT READS TODEM IT MUST READ TOLEM
 IN PAGE 59 COLUMN 1 WHERE IT READS VADUN (261349S 0640443W) IT MUST READ VADUN (261349S 0640434W).
 MODIFIES AIP VOL I, ENR 3.3 AMDT AIRAC 01/2020 WEF 27 FEB 2020

A2620/21 VALID: 18-MAY-21 1939 - UFN
 ON AR-LOWER AR, PAGE 8 COLUMN 1, WPT ALDOS IT MUST READ AS WTP COMPULSORY REPORTING POINT, MODIFIES AIP VOL I ENR 3.1, AMDT AIRAC 01/2020 WEF 27 FEB 2020



A2619/21 VALID: 18-MAY-21 1934 - UFN
IN AR-RNAV RTE. PAGE 15, COLUMN 1, WHERE IT READS UL 211 F
(RNAV 5) IT MUST READ UL 211 F (RNAV) MODIFIES AIP VOL I ENR 3
AMDT 01/2020 WEF 27 FEB 2020

A2618/21 VALID: 18-MAY-21 1925 - UFN
ON ATS RTE SUP PAG 31 IN SECTION BONTA-GEBOS COLUMN 2 WHERE IT
READS 145/323 91 NM IT MUST READ 144/323 91 NM IN SECTION
GEBOS-LOMUR, COLUMN 2, WHERE IT READS 144/320 110 NM IT MUST READ
141/320 110 NM , MODIFIES AIP VOL I, ENR 3.2 AMDT AIRAC 01/2020
WEF 27 FEB 2020

A2318/21 VALID: 04-MAY-21 2005 - UFN
ACFT CERTIFIED FOR OPR RNP 1, IN ACCORDANCE TO AIC 01/11 WEF
03/11 WILL BE AUTHORIZED TO PERFORM SID AND STAR CONVENTIONAL
PROCEDURES, REGARDLESS OF RADIO-NAVAID OPS

A1733/17 VALID: 27-MAR-17 2152 - UFN
IT IS REPORTED THAT RADAR SSR COMPANY
INVAP BROADCAST SIGNAL TRANSPONDER CODE
IN A000 FOR TRIAL RUN

A1705/17 VALID: 25-MAR-17 1237 - UFN
OBST LGT ANTENNA (SAN FERNANDO) COORD
GEO 342704S/0583707W HGT 219M U/S

A1702/17 VALID: 25-MAR-17 1227 - UFN
OBST LGT ANTENNA (SAN FERNANDO) COORD
GEO 342656S/0583717W HGT 191.81M U/S

A1664/17 VALID: 23-MAR-17 0206 - UFN
OBST LGT CRANE LOCATED IN PUERTO MADERO COORD GEO
343615S/0582146.6W HGT 170M SGL LOW INTST

A1663/17 VALID: 23-MAR-17 0203 - UFN
OBST LGT ANTENNA COORG GEO 344544S/0581624W
HGT 72M LOCATED IN QUILMES U/S

=====
EXTENDED AREA AROUND DESTINATION ALTERNATE AIRPORT(S)
=====

SAEF EZEIZA FIR

Please see section EXTENDED AREA AROUND DESTINATION

=====
AREA ENROUTE DEPARTURE - DESTINATION
=====

SACF CORDOBA FIR

A5768/21 VALID: 03-NOV-21 1200 - 02-JAN-22 2300
DLY 1200-2300
AIRSPACE RESERVATION PARAGLIDING FLT WILL TAKE PLACE IN SANTA
ROSA DE CONLARA -SAN LUIS- COORD GEO 322440S/0645549W
322501S/0650128W 321308S/0645744W 321256S/0650250W
AFFECTS CTR AND TMA VALLE DE CONLARA
F) GND G) FL130

A5662/21 VALID: 02-NOV-21 1100 - 07-NOV-21 2200
02,03 1100-2359 03,04 0000-0400 04-07 1100-2200
PJE WILL TAKE PLACE IN HOLMBERG -CORDOBA- COORD GEO
331037S/0642606W
RDO 5NM AFFECTS TMA AND CTR RIO CUARTO, CIRCUIT OF TFC DE AEROCUB
RIO CUARTO AND CIRCUITO DE TRANSITO ESTINDHER. ACT SUBJ TO TFC IN
DEVELOPMENT
F) GND G) FL200

C2114/21 VALID: 01-NOV-21 1200 - 12-NOV-21 2000



DLY 1200-2000
 AREA RESTRINGIDA TEMPO ACT UA FLT EN -RECREO- CATAMARCA
 COORD GEO 291539S/0650624W 291515S/0650213W 291857S/0650112W
 291929S/0650542W AFECTA HELIPUERTO RECREO
 F) 1500FT AGL G) 2300FT AGL
 A5659/21 VALID: 01-NOV-21 1100 - 05-NOV-21 2100
 DLY 1100-2100
 TEMPO RESTRICTED AREA ACT DUE TO EXER MIL IN LUCIO V. MANSILLA
 -CORDOBA- COORD GEO CENTER 294658S/0644525W RDO 10NM CONTROLLED
 AIRSPACE IS NOT AFFECTED
 F) GND G) FL050
 A5661/21 VALID: 30-OCT-21 1100 - 07-NOV-21 2200
 OCT 30,31 AND NOV 04-07 1100-2200, 01-03 1100-2359, 02-04
 0000-0400
 PJE WILL TAKE PLACE IN MEZQUITA- CORDOBA - COORD
 GEO:312409S/0641854W
 RDO 2,5NM AFFECTD CTR AND TMA CORDOBA, ATZ ESCUELA DE AVIACION
 MILITAR AND SAR 57.
 ACT SUBJ TO TFC IN DEVELOPMENT
 F) GND G) FL200
 A5674/21 VALID: 30-OCT-21 1100 - 05-NOV-21 2200
 OCT 30,31 AND NOV 04,05 1100-2200 , NOV 01-03 1100-2359 NOV 02-04
 0000-0400
 PJE WILL TAKE PLACE IN LAS HIGUERAS -CORDOBA- COORD GEO
 330511S/0641606W RDO 5NM AFFECTS CTR AND TMA RIO CUARTO
 CIRCUIT TFC AERoclUB RIO CUARTO ACT SUBJ TO TFC IN
 DEVELOPMENT
 F) GND G) FL200
 A5775/21 VALID: 28-OCT-21 1300 - 13-NOV-21 2200
 DLY 1300-2200
 AIRSPACE RESERVATION ACT IN YERBA BUENA -TUCUMAN- PARAGLIDING
 COORD GEO 261307S/0651243W 263209S/0651607W 264651S/0651915W
 264737S/0651950W 264826S/0651935W 272644S/0652051W
 273411S/0653640W 272036S/0654602W 265712S/0654850W
 264423S/0654552W 261252S/0651656W AFFECTS TFC WEST CIRCUIT AD
 HORCO MOLLE,CIRCUIT TFC AD CONCEPCION AND TMA TUCUMAN
 F) GND G) FL080
 A5690/21 VALID: 25-OCT-21 0000 - UFN
 ANTI-HAIL CAMPAIGN STRUGGLE ACT IN JUJUY AND SALTA RULES
 ESTABLISHED IN AIP 3.5-16 ENR 3.5-17 ENR 3.5-18
 A5354/21 VALID: 07-OCT-21 1747 - 04-JAN-22 2359
 ACC CORDOBA OPR SECT S FREQ 128.8 AND FREQ 126.5 AVBL O/R.
 SECT N OPR FREQ 128.25 AND FREQ 125.1 AVBL O/R. EXC TRAMO UM789
 KADAT-JUJ, UL550 KONRI-ALGAR, UM543 ARMOS-MUMUK OPR SOLO FREQ
 125.1
 A5273/21 VALID: 05-OCT-21 1431 - 05-JAN-22 2359
 GLD FLY ZONE ORONIO SECT TEMPO DEACTIVATED REF AIP
 ENR 5.5-1 AERIAL SPORTING REACREATIONAL ACTIVITIES
 AIRAC AMDT 01/2018 11-OCT-2018
 A5271/21 VALID: 05-OCT-21 1323 - 05-JAN-22 2130
 FRI,SAT,SUN AND OCT 11, NOV 22, DIC 08 BTN 1200-2130
 GLD FLY WILL TAKE PLACE IN JUAREZ CELMAN ATZ -CORDOBA-
 COORD GEO: 311330S/0640735W 311050S/064532W ARCH 4NM
 WITH CENTER IN COORD GEO: 311300S/0641000W TO
 COORD: 310900S/0641015W-311331S/0641012W.
 AFFECTS CORDOBA CTR ACT SUBJ TO TFC IN DEVELOPMENT
 F) 3100FT ALT G) 3400FT ALT
 A5270/21 VALID: 05-OCT-21 1318 - 05-JAN-22 2100
 SAT,SUN SR-SS
 GLD FLT WILL TAKE PLACE IN ZONE AD JESUS MARIA -CORDOBA-
 COORD GEO: SECT 1: 305711S/0640545W 304444S/0640202W-
 305238S/0634459W 310157S/0635522W HGT MAX 3500FT
 SECT 2: 304444S/0640202W- 302512S/0635800W- 304013S/0632635W



305238S/0634459W HGT MAX FL060 AFFECTS CORDOBA TMA.
 ACT SUBJ TO TFC IN DEVELOPMENT
 F) GND G) FL 060

A5101/21 VALID: 27-SEP-21 2206 - UFN
 SIGNIFICANT EN-ROUTE WEATHER PHENOMENON CHARTS SFC/FL250 TEMPO
 SUSPENDED

A4414/21 VALID: 20-AUG-21 1527 - UFN
 IN DESIGNATORS OF REP (WO NAVAIDS POSITION) PAG 12,
 WHERE IT READS LADER IT SHOULD READ KOLNA. COORD WHERE
 IT READS 260830S/0540556W IT SHOULD READ 260833S/0540554W.
 MODIFIES AIP VOL I, ENR 4.4, AMDT 03/2020 WEF 08 OCT 2020

A4413/21 VALID: 20-AUG-21 1522 - UFN
 IN CHARTS RTE -CHARTS IN RTE OF NAVIGATION LOWER 1
 WHERE IT READS LADER WHERE IT READS KOLNA.
 MODIFIES AIP VOL I, ENR 6.1 AMDT 01/2020 WEF 27 FEB 2020

A4412/21 VALID: 20-AUG-21 1501 - UFN
 ATS RTE -RTE ATS LOWER PAG 11, COLUMN 1, WHERE IT READS
 LADER IT SHOULD READ KOLNA.IT SHOULD READS AS MANDATORY
 MODIFIES AIP VOL I, ENR 3.1, AMDT 01/2020 WEF 27 FEB 2020

A4411/21 VALID: 20-AUG-21 1458 - UFN
 IN CHART IN RTE -AREA CHARTS TMA FOZ ARR/DEP RTE AND TFC
 WHERE IT READS LADER IT SHOULD READ KOLNA
 MODIFIES AIP VOL I, ENR 6.8, AMDT 3/2019 WEF 5 DEC 2019

A4324/21 VALID: 14-AUG-21 1734 - 14-NOV-21 1600
 A/G FAC FREQ 10024KHZ 6586KHZ 3016KHZ 6649KHZ 2944KHZ AND 10006KHZ
 U/S

A4162/21 VALID: 04-AUG-21 2144 - 03-NOV-21 2359
 TMA SALTA CTL SER IS NOT PROVIDED DUE TO LIMITED COVERAGE IN ATS
 COM,AFFECTED SECT ARC OF 41/55 NM DME/SAL BTN RDL 050 TIL RDL 086
 PASSING BY RDL 060 VOR/SAL.AFFECTED SECT ARC OF 25/55NM DME/SAL
 BTN RDL 086 TIL RDL 160 PASSING BY RDL 120 VOR/SAL
 F) 2000FT G) FL100

A4160/21 VALID: 04-AUG-21 2124 - 03-NOV-21 2359
 ENTRANCE TO TMA SALTA BTN RDL 050 TIL RDL 160 PASSING BY RDL 100
 VOR/SAL. IN CASE OF NOT ESTABLISHING COM SAL CTL, COMMUNICATE
 JUJUY APP/TWR FREQ COM 118.70 CPPAL-119.75 CAUX
 F) 2000FT G) FL100

A4154/21 VALID: 04-AUG-21 1713 - 03-NOV-21 2359
 TFC TO AD SASJ ENTRANCE TO TMA SALTA VIA
 AWY T673 IT MUST CROSS WPT TAGUA WITH
 FL 160 OR UPPER MNM ALT

A3895/21 VALID: 21-JUL-21 1640 - UFN
 IN ENR 6.10 CHARTS IN RTE -CHART FOR VFR FLT BELOW TMA
 BAIRES IN VERTICAL LIMIT ATZ MARIANO MORENO (ENO) WHERE IT
 READS 2500FT/GND IT MUST READS 1500FT/GND. MODIFIES AIP VOL I,
 AMDT 3/2019, WEF 05 DEC 2019

A3894/21 VALID: 21-JUL-21 1636 - UFN
 IN AIP
 ENR 6.8, CORDOBA TMA RTE ARR/DEP AND TRANSIT
 WHERE IT READS TRC IT MUST READ RCU.
 ENR 6.13, CHARTS IN RTE - NAVIGATION CHARTS ON RTE - CONTINGENCY
 PLAN FOR REPUBLICA ARGENTINA- SIMPLIFIED NETWORK OF ATS
 RTE-INF,WHERE IT READS TRC IT MUST READ RCU.
 ENR 6.14, CHARTS ON RTE -NAVIGATION CHARTS ON RTE -CONTINGENCYPLAN
 FOR REPUBLICA ARGENTINA-SIMPLIFIED NETWORK OF ATS RTE-SUP,WHERE IT
 READS TRC IT MUST READ RCU.
 MODIFIES AIP VOL I, AMDT AIRAC 03/2019 WEF 05 DEC 2019

A3893/21 VALID: 21-JUL-21 1632 - UFN
 IN ENR 6.12 CHARTS IN RTE -CHART FOR HELICORRIDORS BAIRES IN
 VERTICAL LIMIT ATZ MARIANO MORENO (ENO) WHERE IT READS 2500FT/GND
 IT MUST READS 1500FT/GND. MODIFIES AIP VOL I, AMDT 3/2019, WEF 05
 DEC 2019

A3891/21 VALID: 21-JUL-21 1628 - UFN



IN ENR 6.8 CHARTS IN RTE -CHART FOR AREA, IN TMA FOZ ARR RTE,
DEP AND TRANSIT, WHERE IT READ COSTA 252853S/0551355W
IT MUST READS COSTA 253043S/0551411W. MODIFIES AIP VOL 1, AMDT
3/2019, WEF 05 DEC 2019

A3597/21 VALID: 05-JUL-21 1434 - UFN
IN ENR 1.10 FLT OF PLANNING -ANEXO I- NETWORK SIMPLIFIED OF RTE
ATS -LOWER AIRSPACE- IN PAGE 30, ELIMINATE AWY B682. ADD AWY G550,
ONE-WAY: NOT, TWO-WAY: PUERTO WILLIAMS VOR/DME PWL BALMACEDA
VOR/DME BAL, REMARKS: NOT.
IN ENR 1.10 FLT OF PLANNING-ANEXO I- NETWORK SIMPLIFIED OF RTE ATS
-UPPER AIRSPACE- IN PAGE 32, IN AWY UL417, WHERE IT SAYS PUPSI IT
MUST SAY TOPOG. ADD AWY UL670, ONE-WAY: NOT, TWO-WAY: PUERTO
WILLIAMS VOR/DME PWL BALMACEDA VOR/DME BAL, REMARKS: NOT. ADD AWY
UN527, ONE-WAY: GUVOL- SANJUAN VOR/DME JUA, TWO-WAY: NOT, REMARKS:
NOT. IN AWY UM529, IN ONE-WAY, WHERE IT SAYS ASIMO -ARPAS IT MUST
SAY SAN JUAN VOR/DME JUA -ASIMO. ELIMINATE AWY UM658
MODIFIED AIP VOL I AMDT 3/20 WEF 08-OCT-2020

A3596/21 VALID: 05-JUL-21 1428 - UFN
IN ATS AIRSPACE FIR, UIR, CTR, IN MARIANO MORENO ATZ
WHERE IT SAYS ESTACION JOSE C. PAZ (343110S/0584500W)
IT MUST SAY ESTACION JOSE C. PAZ (343109S/0584500W) MODIFIED
AIP VOL I, ENR 2.1-20, AMDT AIRAC 3/2020 WEF 08-OCT-2020

A3539/21 VALID: 02-JUL-21 0011 - UFN
IN AMDT AIRAC 2/21 WEF 17 JUN 2021, IN ENR 4.4 - RADIO-AID AND
SYSTEM OF NAVEGATI?N - NAME- CODE- DESIGNATORS FOR SIGNIFICANT
POINTS, ADD WPT IN AGREEMENT TO COLUMN NAME OF DESIGNATOR/COORD
GEO/ LOCATION:
ANDEG/283657S-0641730W/W6 - UW6 - UZ112 -
ANDUD/353438S-0625749W/UW68 UT688
ANSIG/281522S-0644952W/W5
ASODO/260628S-0640842W/UT672 T673
DEVEB/311000S-0635115W/IAC CBA
DILOG/392015S-0681600W/UZ109 Z109
DONED/393839S-0603741W/UW33 - UZ117
EDPUN/291936S-0614201W/UL404
EDVIK/280401S-0635120W/W8-UT 680
EGUNO/403611S-0702456W/W26-UW26-UZ109 Z109
ESLED/271120S-0620419W/UW7 - UL404
ESOKA/225806S-0645117W/UL322
ESONA 312606S - 0640952W IAC CBA
ETALU/343058S-0671055W/UM424 - UT685
GEDUN/332923S-0662256W/UA 306 - UT685 - UL 405
GEGAT/355549S-0681926W/UW37 - UT685
GEMDO/494231S-0674816W/ UW45-UZ117

A3539/21 NOTAMN

Q) SAXX/QAPXX/IV/BO/E/000/999/6431S06128W999

A) SAEF SACF SAMF SARR SAVF PART 3 OF 4 B) 2107020011 C) PERM

E) IN AMDT AIRAC 2/21 WEF 17 JUN 2021, IN ENR 4.4 - RADIO-AID AND
SYSTEM OF NAVEGATI?N - NAME- CODE- DESIGNATORS FOR SIGNIFICANT
POINTS, ADD WPT IN AGREEMENT TO COLUMN NAME OF DESIGNATOR/COORD
GEO/ LOCATION:

ORBAL/455354S-0705216W/UW58-W58-UZ116 - Z116

ORUDO/472904S-0675356W/W49

PABEN/304156S-0612923W/UT 652-UL 404

POPLU/335104S-0644801W/UA306-UZ114-UL 405

PUDBA/224815S-0652731W/UN525

PULNA/401714S-0610039W/UZ117

QUILI/251729S-0622514W/ UL 404-UM 799 REPUM/310149S-0621151W/UT652
UL550

ROGOD/323147S-0682119W/UZ108 - UZ105 SIGEM/365626S-0691014W/UZ107-
Z107-UT685 SILOP/353838S-0660510W/UM783 - UB684 - UZ114

SIPOM/330443S-0664926W/UT670 UT652

SULSO/312233S-0675611W/UM529-UZ108



TAGUA/251747S-0643608W/T672 TMA SAL
 TIMDO/383443S-0662616W/UT669
 //END PART 03//
 A3539/21 NOTAMN
 Q) SAXX/QAPXX/IV/BO/E/000/999/6431S06128W999
 A) SAEF SACF SAMF SARR SAVF PART 4 OF 4 B) 2107020011 C) PERM
 E) IN AMDT AIRAC 2/21 WEF 17 JUN 2021, IN ENR 4.4 - RADIO-AID AND
 SYSTEM OF NAVIGATION - NAME- CODE- DESIGNATORS FOR SIGNIFICANT
 POINTS, ADD WPT IN AGREEMENT TO COLUMN NAME OF DESIGNATOR/COORD
 GEO/ LOCATION:
 TOGNO/430052S-0624348W/UZ117
 TOLEM/303117S-0613103W/UL404 UM 400
 UDUPA/334704S-0623818W/UT670-UZ 113
 UREVI/243133S-0640409W/UM789-UZ 112
 USTOT/221111S-0660420W/UM776
 USVER/353407S-0680138W/UM783 - UB684 - UT685
 USVET/331527S-0671533W/UA306 - UL 405 - UT 652
 VADUN/261349S-0640434W/UT672-UZ112
 VUGMA/331208S-0660945W/UT670-UT685
 VULEK/285858S-0625321W/ UT 680-W8
 VUMUD/350423S-0640140W/UT700-UT 688
 VUROT/314629S-0634820W/UW15 - UT 652 - UZ 113
 VUSAP/362226S-0611240W/UT654 UT 688
 WHERE IT READS AMVUK IT MUST READS MIBOK 544904S/0674032W IAC USU,
 WHERE IT READS LITOK IT MUST READS ROMIV 544005S/0683638W G/UG
 550-SID USU-UL 670
 //END PART 04/04//

A3537/21 VALID: 01-JUL-21 2338 - UFN
 IN ROUTES ATS -NAVIGATION ROUTES AREA, PAGE 27, IN UL670 (RNAV5)
 BALMACEDA SECTION VOR/DME BAL-ROGEL, COLUMN 2, WHERE IT READS
 164/344 50 NM, IT MUST READS 166/346 50 NM. IN ROGEL-ASADO
 SECTION, COLUMN 2, WHERE IT READS 164/344 77 NM IT MUST READS
 166/346 77 NM. IN SECTION ASADO-ASOPA , COLUMN 2, WHERE IT READS
 164/343 96 NM IT MUST READS 166/346 96 NM. IN SECTION ASOPA-BUVOK,
 COLUMN 2, WHERE IT READS 164/343 67 NM IT MUST READS 166/346 67
 NM. IN SECTION BUVOK-EGOSA, COLUMN 2, WHERE IT READS 164/343 77 NM
 IT MUST READS 166/346 77 NM. MODIFIES AIP VOL I ENR 3.3 AMDT AIRAC
 2/2020 WEF 26 MAR 2020.

A3402/21 VALID: 25-JUN-21 1940 - UFN
 IN ATS AIRSPACE - FIR, UIR, TMA PAGE 22 CTR RIO CUARTO COLUMN 1
 LATERAL LIMITS WHERE IT SAYS VOR TRC MUST SAY VOR RCU MODIFIES AIP
 VOL I ENR 2.1 AMDT AIRAC 2/2018 31-JAN-2019

A3254/21 VALID: 17-JUN-21 2009 - UFN
 IN AIP ATS RTE - ATS RTE UPPER PAGE 29, COLUMN 6,
 WAY COMODORO RIVADAVIA VOR/DME CRV-LOMIN IT MUST READ
 COMODODO RIVADAVIA ACC (SECT S) 125.7MHZ 2965KHZ 5547KHZ
 11282KHZ REF AIP VOL I ENR 3.2 AIRAC AMDT 01/2020
 WEF 27-FEB-2020

A2997/21 VALID: 05-JUN-21 1847 - UFN
 IN ATS RTE -AREA NAVIGATION ROUTES- PAGE 25, COLUMN 1, WHERE IT
 READS KOGSA, IT MUST READ DIKOR MODIFIES AIP VOL I, ENR 3.3, AMDT
 1/2020 WEF 27 FEB 2020

A2996/21 VALID: 05-JUN-21 1843 - UFN
 IN CHART RTE - NAVIGATION CHART IN RTE LOWER 1 IN AWY W70 AND
 UPPER 1 IN AWY UL550, WHERE IT READS KOGSA, IT MUST READ DIKOR
 MODIFIES AIP VOL I , ENR 6.1-6.2, AMDT 1/2020 WEF 27 FEB 2020

A2995/21 VALID: 05-JUN-21 1839 - UFN
 IN ATS RTE- LOWER ATS RTE- PAGE 52, COLUMN 1, WHERE IT READS
 KOGSA,IT MUST READ DIKOR. MODIFIES AIP VOL I, ENR 3.1 AMDT 1/2020
 WEF 27 FEB 2020

A2972/21 VALID: 04-JUN-21 2029 - UFN
 IN -RADIO-AID AND SYSTEM OF NAVIGATION -NAME- CODE DESIGNATORS FOR
 SIGNIFICANT POINTS, PAG 11, COLUMN 1, WHERE IT READS KOGSA MUST IT



READ DIKOR. MODIFIES AIP VOL I, ENR 4.4, AMDT 1/2019 WEF 18 JUL 2019

A2858/21 VALID: 31-MAY-21 1753 - UFN
 IN AIP RUTAS ATS - RUTAS DE NAVEGACION DE AREA, PAGE 25 IN SECTION PUBER-KOGSA COLUMN 2 WHERE IT READS COURSE 155 DIST 89 NM IT MUST READ COURSE 155 DIST 51 NM. IN SECTION KOGSA-SISAP WHERE IT READS COURSE 155 DIST 89 NM IT MUST READ COURSE 155 DIST 38 NM.
 REF AIP VOL I ENR 3.3 AIRAC AMDT 1/2020 WEF 27 FEBRUARY 2020

A2769/21 VALID: 26-MAY-21 2333 - UFN
 IN CHARTS ATS RTE CHARTS FOR AREAS, IN TMA PARANA ARR RTE/ DEPARTURES AND TRANSIT, IN AWY UL550 BTN ROKER- VOR ROS, WHERE IT READ 81NM MUST READS 73NM. MODIFIES AIP VOL I, ENR 6.8, AMDT 3/19 WEF 05 DEC 2019.

A2687/21 VALID: 21-MAY-21 1934 - UFN
 IN ATS RTE -LOWER ATS RTE- PAGE 26, IN SECTION ITADO-RECONQUISTA VOR/DME RTA, COLUMN 2 WHERE IT READS 209/025 30NM IT MUST READ 209/029 30NM MODIFIES AIP VOL I, ENR 3.1, AMDT AIRAC 1/2020 WEF 27-FEB-2020.

A2657/21 VALID: 20-MAY-21 1924 - UFN
 IN AIP RUTAS ATS- RUTAS DE NAVEGACION DE AREA, PAGE 65, IN SECTION ANLIS-LOLIV, COLUMN 2, WHERE IT READS 122/302 20 NM MUST READ 121/301 20 NM. REF AIP VOL I ENR 3.3 AIRAC AMDT 1/2020 WEF 27 FEBRUARY 2020

A2656/21 VALID: 20-MAY-21 1922 - UFN
 IN AIP RUTAS ATS - RUTAS DE NAVEGACION DE AREA, PAGE 19, WPT GEMIK, COLUMN 1, WHERE IT READS 244130S-0623131W MUST READ 244230S-0623131W. IN PAGE 32, WPT ETALU, COLUMN 1 WHERE IT READS 3430582S-0671055W IT MUST READ 343058S-0671055W. REF AIP VOL I ENR 3.3 AMDT AIRAC 1/2020 WEF 27 FEBRUARY 2020

A2661/21 VALID: 20-MAY-21 1710 - UFN
 IN AIP RUTAS ATS-RUTAS DE NAVEGACION DE AEREA IN PAGE 70 IN COLUMN 2 DONBO-TIRGA WHERE IT READS 179/359 225 NM MUST READ 181/359 225 NM AND IN TIRGA-GUDUX WHERE IT READS 178/358 61 NM MUST READ 179/358 61 NM.
 IN COLUMN 5 IN TRAMO WPT DONBO-GUDUX IN DIRECTION TO GUDUX WHERE IT READS IMPAR MUST READ PAR AND IN TRAMO WPT GUDUX-DONBO IN DIRECTION TO DONBO WHERE IT READS PAR IT MUST READ IMPAR MODIFIES AIP VOL I, ENR 3.3 AMDT 1/20 WEF 27 FEB 2020

A2658/21 VALID: 20-MAY-21 1635 - UFN
 IN AIP RUTAS ATS - RUTAS DE NAVEGACION DE AREA, PAGE 8, IN WPT EL TURBIO NDB BIO, COLUMN 1 WHERE IT READS 513836S-0721317W MUST READ 513636S-0721317W PAGE 82, IN WPT IRAVU, COLUMN 1, WHERE IT READS 504605S-0684619W MUST READ 504605S-0684519W. REF AIP VOL I, ENR 3.3 AIRAC AMDT 1/2020 WEF 27 FEBRUARY 2020

A2642/21 VALID: 19-MAY-21 1821 - UFN
 IN AMDT AIRAC 1/2020 WEF FEB 27 2020 IN ENR 3.3 - RUTAS ATS - RUTAS DE NAVEGACION DE AREA, PAGES 28 AND 29 COLUMN 5, IN SEGMENT KUBIR-GUALEGUAYCHU VOR/DME GUA- IN DIRECTION TO -GUALEGUAYCHU VOR/DME GUA WHERE IT READS IMPAR MUST READ PAR

A2641/21 VALID: 19-MAY-21 1819 - UFN
 IN AMDT AIRAC 1/2020 WEF 27 FEB 2020 IN ENR 3.1 RUTAS ATS-RUTAS ATS INFERIORES, PAGE 49, IN SECTION MUBES-RIO GALLEGOS VOR/DME GAL, IN COLUMN 3, ADD FL MNM FL60. MODIFY AIP VOL I

A2639/21 VALID: 19-MAY-21 1813 - UFN
 IN AIP ENR 6.3 CARTAS EN RUTA -CARTA DE NAVEGACION EN RUTA INF 2- AMDT AIRAC 01/2020 WEF 27 FEB 2020, WHERE IT READS: TRC IT MUST READ: RCU
 IN AIP ENR 6.4 CARTAS EN RUTA -CARTA DE NAVEGACION EN RUTA SUP 2- AMDT AIRAC 01/2020 WEF 27 FEB 2020 WHERE IT READS: TRC IT MUST READ: RCU

A2630/21 VALID: 19-MAY-21 1345 - UFN
 IN AIP RUTAS ATS -RUTAS DE NAVEGACION DE AREA, PAGE 6, IN SECTION ISMIL-ENRIL, COLUMN 2 WHERE IT READS 173 NM



IT MUST READ 124 NM. REF AIP VOL I, ENR 3.3 IN AIRAC
AMDT 1/2020 WEF 27 FEBRUARY 2020

A2629/21 VALID: 19-MAY-21 1333 - UFN
IN AIP RUTAS ATS - RUTAS ATS INFERIORES, PAGE 22, IN WPT SIMES,
COLUMN 1, WHERE IT READS 320305S-0633353W MUST READ
320306S-0633352W REF AIP VOL 1 ENR 3.1 AIRAC AMDT 1/2020 WEF 27
FEBRUARY 2020

A2628/21 VALID: 19-MAY-21 1330 - UFN
IN AIP VOL I AMDT AIRAC 1/2020 WEF 27 FEB 2020, ENR 6.1 CARTAS EN
RUTA- CARTAS DE NAVEGACION EN RUTA INF 1, SALTA TMA, WHERE IT
READS KOVAT 242845S 0642704W ADD REP O/R

A2621/21 VALID: 18-MAY-21 1943 - UFN
IN AR-RNAV, PAGE 74, COLUMN 1, WHERE IT READS RODOG IT MUST READ
RODOG.
PAGE 19, COLUMN 1, WHERE IT READS GEMIK (244130S 0623131W) IT MUST
READ GEMIK (244230S 0623131W).
IN PAGE 30 COLUMN 1 WHERE IT READS TODEM IT MUST READ TOLEM
IN PAGE 59 COLUMN 1 WHERE IT READS VADUN (261349S 0640443W) IT MUST
READ VADUN (261349S 0640434W).
MODIFIES AIP VOL I, ENR 3.3 AMDT AIRAC 01/2020 WEF 27 FEB 2020

A2620/21 VALID: 18-MAY-21 1939 - UFN
ON AR-LOWER AR, PAGE 8 COLUMN 1, WPT ALDOS IT MUST READ AS WTP
COMPULSORY REPORTING POINT, MODIFIES AIP VOL I ENR 3.1, AMDT AIRAC
01/2020 WEF 27 FEB 2020

A2619/21 VALID: 18-MAY-21 1934 - UFN
IN AR-RNAV RTE. PAGE 15, COLUMN 1, WHERE IT READS UL 211 F
(RNAV 5) IT MUST READ UL 211 F (RNAV) MODIFIES AIP VOL I ENR 3
AMDT 01/2020 WEF 27 FEB 2020

A2618/21 VALID: 18-MAY-21 1925 - UFN
ON ATS RTE SUP PAG 31 IN SECTION BONTA-GEBOS COLUMN 2 WHERE IT
READS 145/323 91 NM IT MUST READ 144/323 91 NM IN SECTION
GEBOS-LOMUR, COLUMN 2, WHERE IT READS 144/320 110 NM IT MUST READ
141/320 110 NM , MODIFIES AIP VOL I, ENR 3.2 AMDT AIRAC 01/2020
WEF 27 FEB 2020

A2318/21 VALID: 04-MAY-21 2005 - UFN
ACFT CERTIFIED FOR OPR RNP 1, IN ACCORDANCE TO AIC 01/11 WEF
03/11 WILL BE AUTHORIZED TO PERFORM SID AND STAR CONVENTIONAL
PROCEDURES, REGARDLESS OF RADIO-NAVAID OPS

SAEF EZEIZA FIR

Please see section EXTENDED AREA AROUND DESTINATION



[Crew Alert & Bulletin]

=====
CREW ALERT
=====

SB007/14 VALID: 12-OCT-14 0330 - UFN

SB007/14 COMPANY NOTAM
WHEN PLANNING A COST INDEX, 2 OPTIONS ARE AVAILABLE. PILOTS MAY EITHER SELECT A SPECIFIC COST INDEX NUMBER FROM THE LIST, OR THEY MAY SELECT "AUTO". WHEN PLANNING AN "AUTO" COST INDEX, THE SYSTEM WILL REFERENCE THE SCHEDULED "TIME ENROUTE" OPTION AND ATTEMPT TO CHOOSE A COST INDEX WHICH CLOSELY MATCHES THIS VALUE. NOTE THAT THE "TIME ENROUTE" OPTION IS MEANT AS A GATE TO GATE TIME (AS INDICATED ON AN AIRLINE'S FLIGHT SCHEDULE, FOR EXAMPLE). IF A "TIME ENROUTE" OF 2:30 IS SELECTED, THE SYSTEM WILL SUBTRACT THE TAXI TIMES FROM THIS VALUE TO DETERMINE THE SCHEDULED AIR TIME. IT WILL THEN DETERMINE AND USE THE COST INDEX WHICH MATCHES THIS AIR TIME.

SB003/13 VALID: 13-JUL-13 0320 - UFN

SB003/13 COMPANY NOTAM
ALL FLIGHT CREW: PLEASE PAY SPECIAL ATTENTION TO THE UNITS SELECTION WHEN GENERATING A FLIGHT PLAN. FAILURE TO IDENTIFY THE CORRECT UNITS WHEN REFUELING PRIOR TO FLIGHT CAN RESULT IN DEPARTING WITH INSUFFICIENT FUEL AND/OR AN ERRONEOUS PAYLOAD.

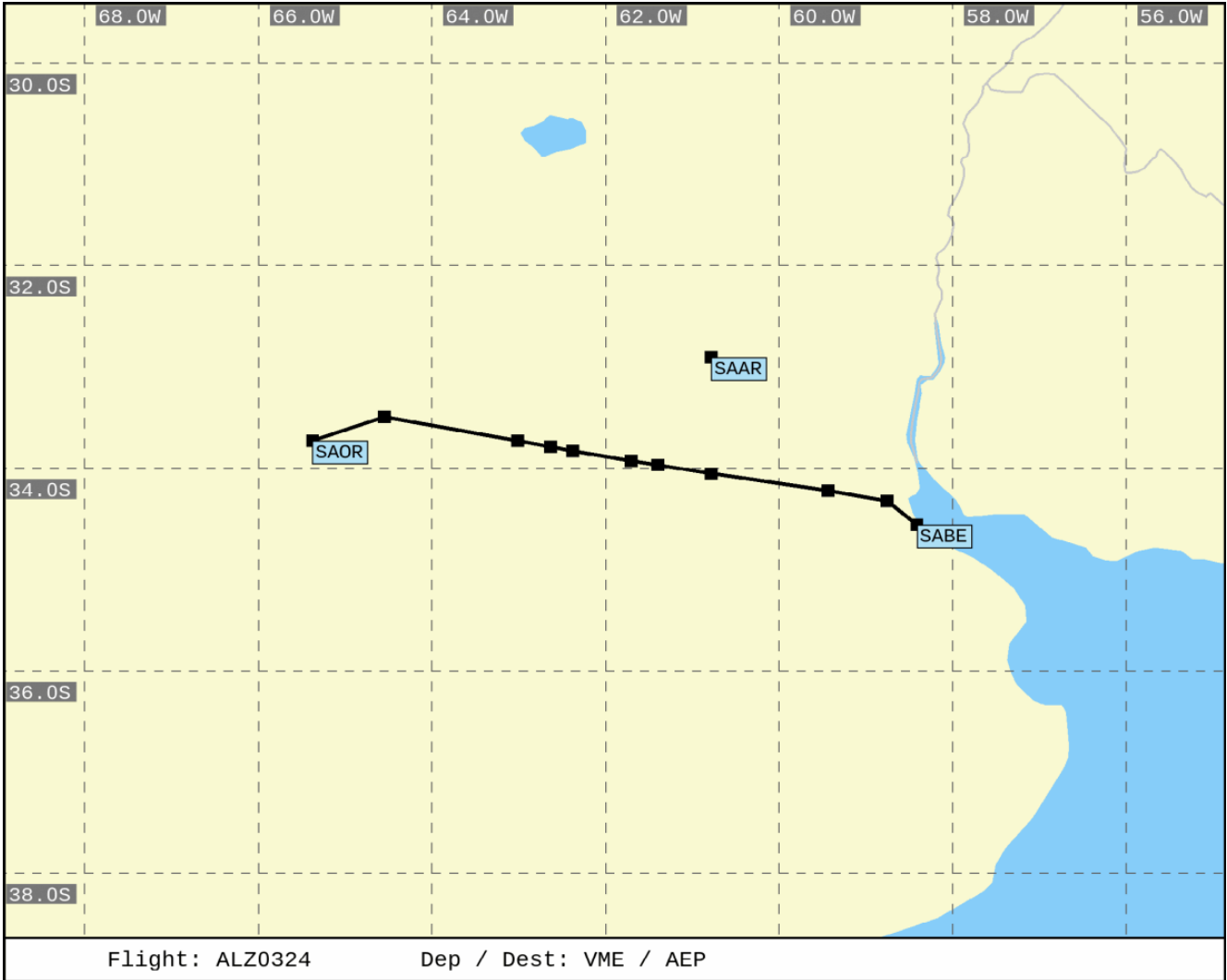
=====
CREW BULLETIN
=====

NIL

===== END OF LIDO-NOTAM-BULLETIN =====

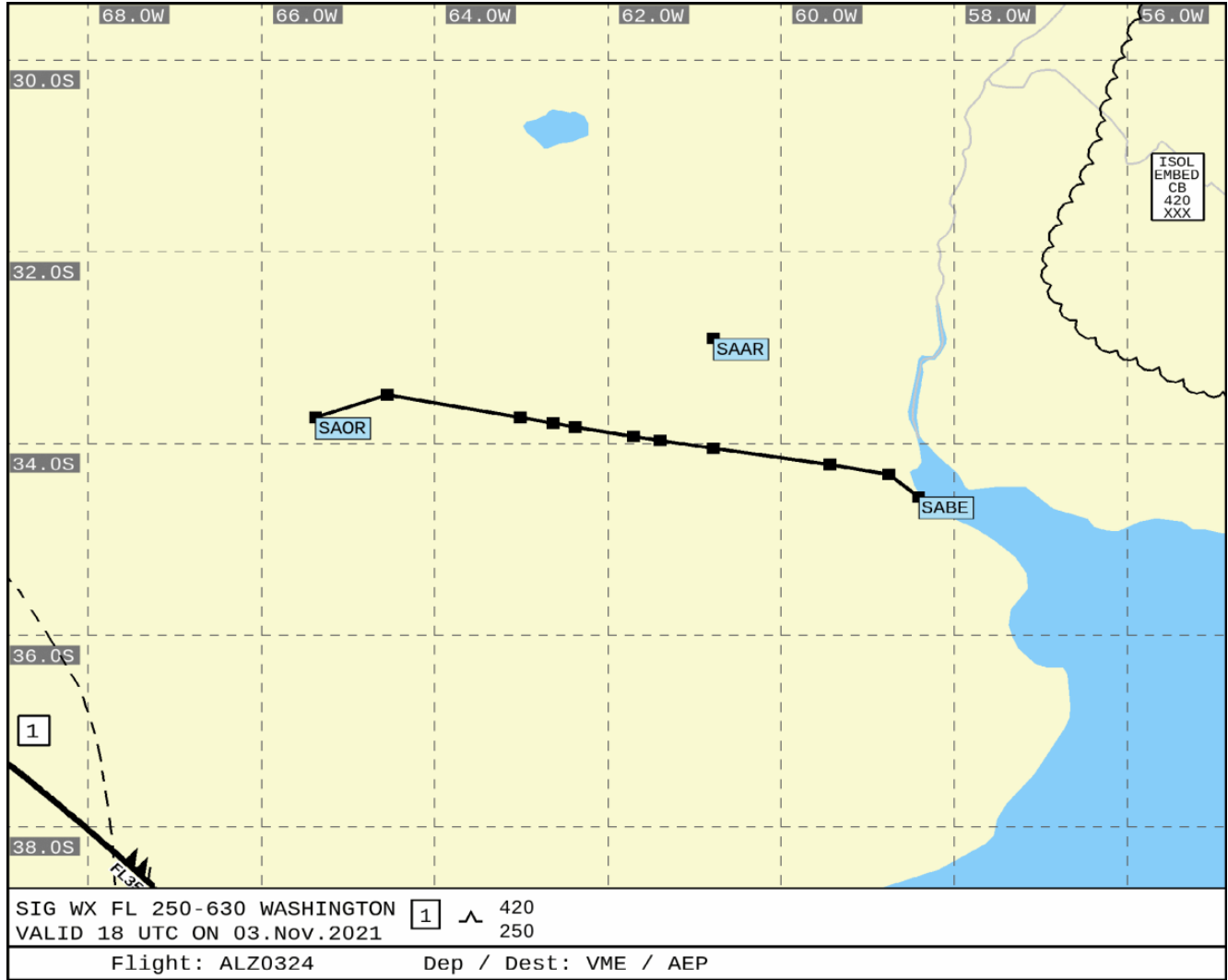


Route



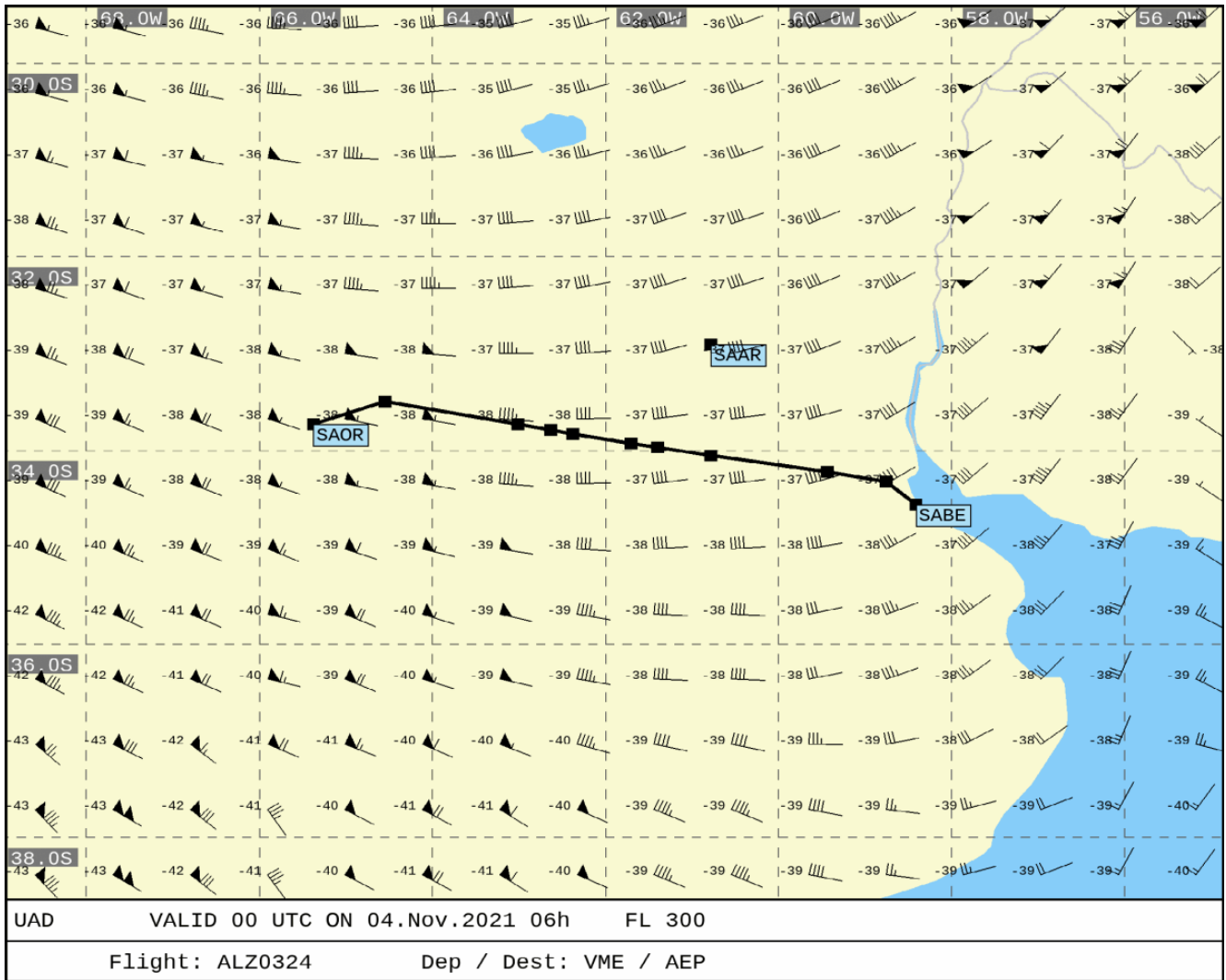


SigWx 1 of 1



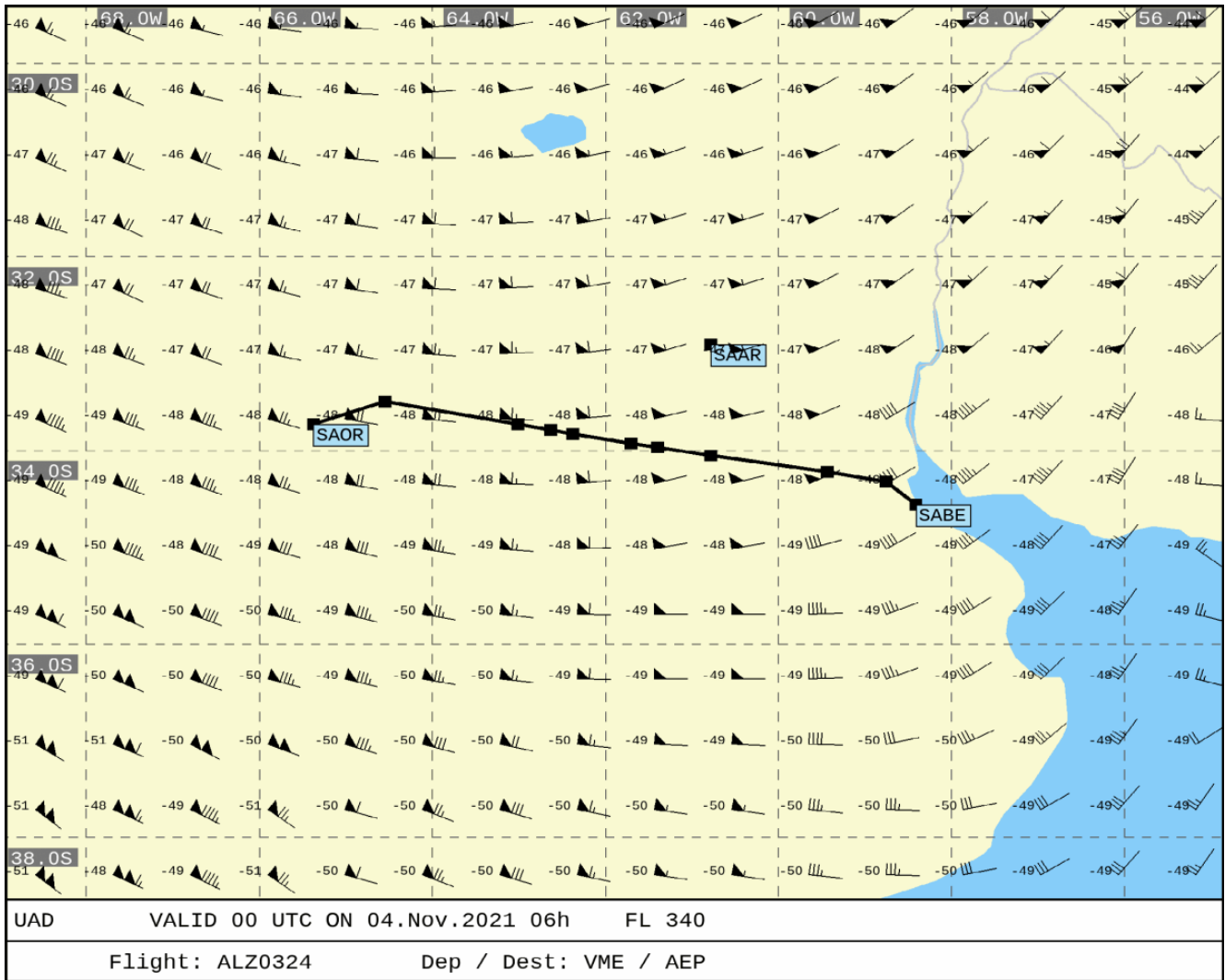


UAD 1 of 3



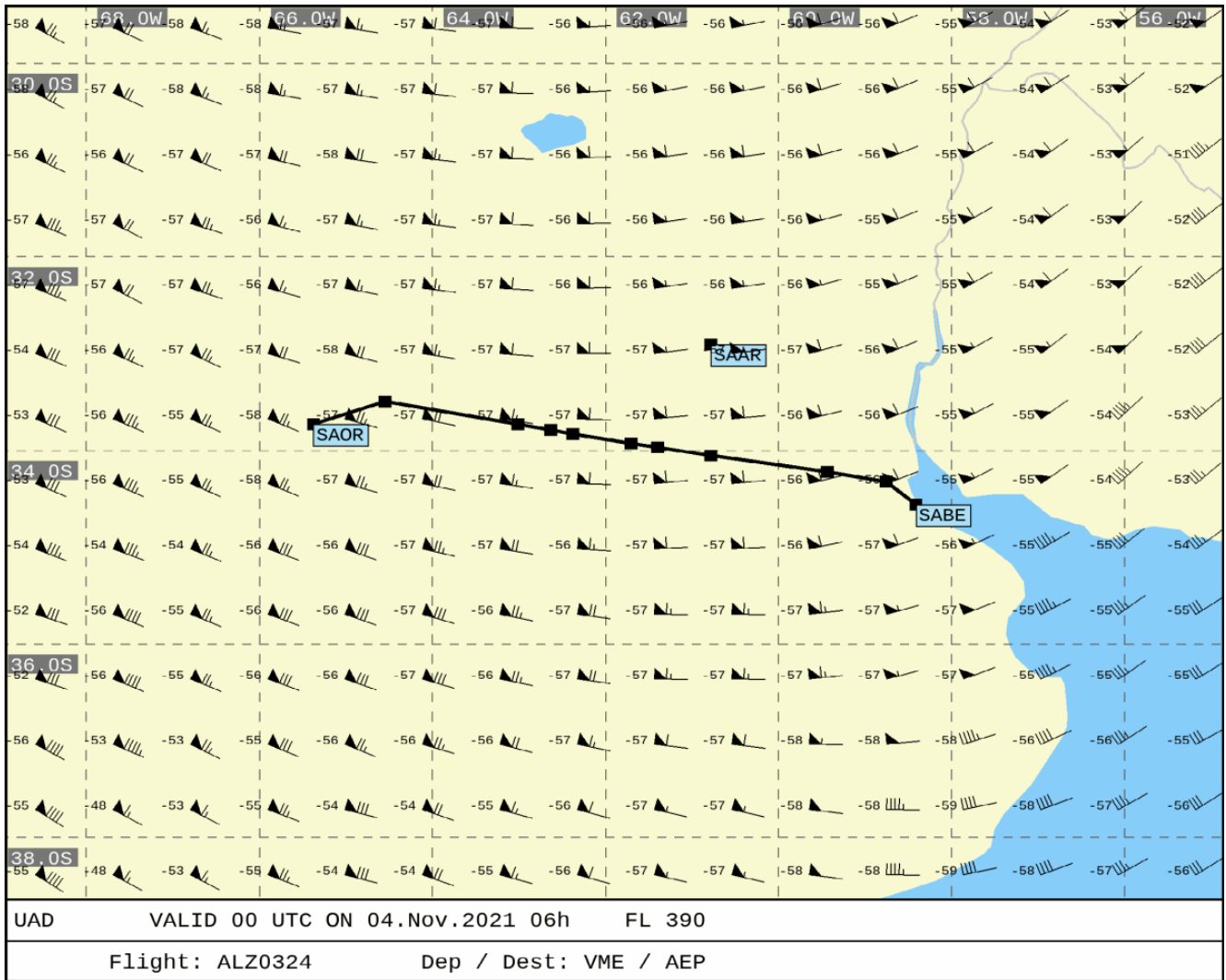


UAD 2 of 3





UAD 3 of 3





Vertical profile

